

# RHO Polyclonal Antibody

Catalog Number: 162433

## Product name

RHO Polyclonal Antibody

## Specificity

Mouse, Rat

## Antibody description

Polyclonal antibody to RHO

## Preparation

Antigen: A synthetic peptide corresponding to a sequence within amino acids 200 to the C-terminus of human RHO (NP\_000530.1).

## Formulation

PBS with 0.02% sodium azide, 50% glycerol, pH7.3.

## Storage

Store at -20°C. Avoid freeze / thaw cycles.

## Clonality

Polyclonal

## Ig Type

Rabbit IgG

## Applications

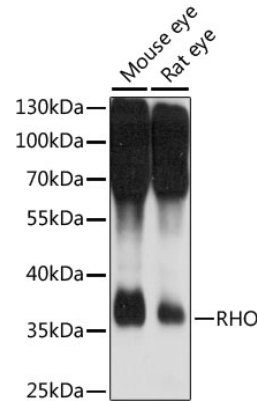
WB, IHC

## Dilutions

WB 1:500 - 1:2000

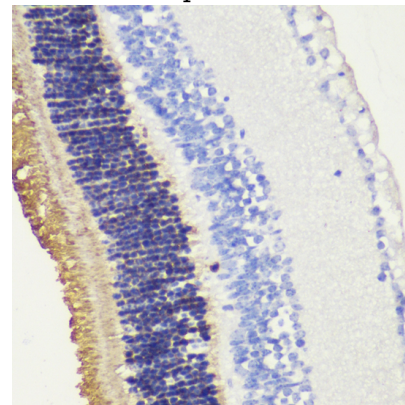
IHC 1:50 - 1:200

## Validations



Western blot - RHO Polyclonal Antibody

Western blot analysis of extracts of various cell lines, using RHO antibody at 1:1000 dilution. Secondary antibody: HRP Goat Anti-Rabbit IgG (H+L) at 1:10000 dilution. Lysates/proteins: 25ug per lane. Blocking buffer: 3% nonfat dry milk in TBST. Detection: ECL Basic Kit. Exposure time: 10s.



Immunohistochemistry - RHO Polyclonal Antibody

Immunohistochemistry of paraffin-embedded mouse retina using RHO antibody at dilution of 1:200 (40x lens).