

Product name

SDHC antibody

Specificity

Human, Mouse, Rat; other species not tested.

Antibody description

SDHC Rabbit Polyclonal antibody. Positive IHC detected in human breast cancer tissue. Positive WB detected in human liver tissue, HepG2 cells, MCF7 cells, mouse lung tissue. Observed molecular weight by Western-blot: 15kd

Preparation

This antibody was obtained by immunization of SDHC recombinant protein (Accession Number: NM_003001). Purification method: Antigen affinity purified.

Formulation

PBS with 0.02% sodium azide and 50% glycerol pH 7.3.

Storage

Store at -20°C. DO NOT ALIQUOT

Clonality

Polyclonal

Ig Type

Rabbit IgG

Applications

ELISA, WB, IHC

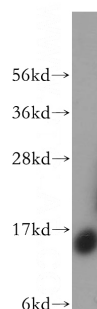
Dilutions

Recommended Dilution:

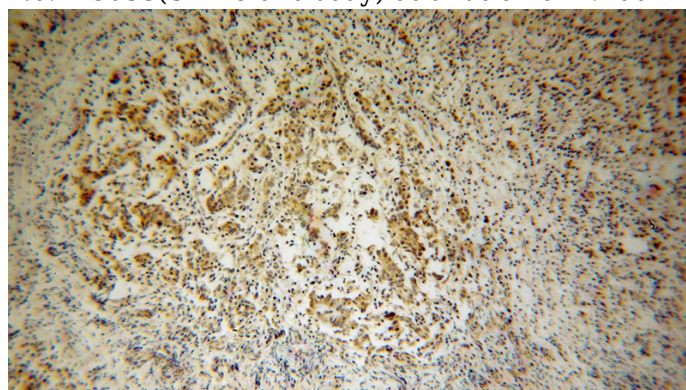
WB: 1:500-1:5000

IHC: 1:20-1:200

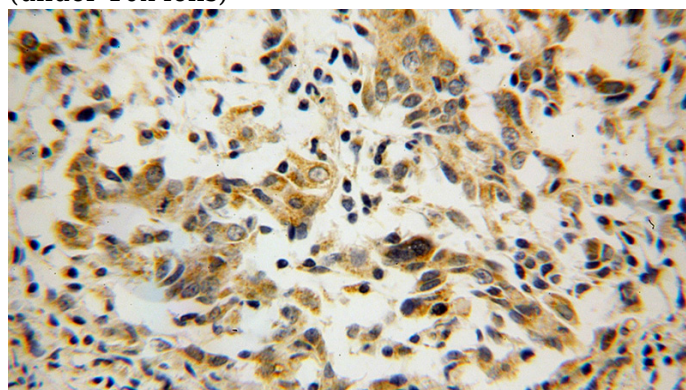
Validations



human liver tissue were subjected to SDS PAGE followed by western blot with Catalog No:115033(SDHC antibody) at dilution of 1:400



Immunohistochemical of paraffin-embedded human breast cancer using Catalog No:115033(SDHC antibody) at dilution of 1:100 (under 10x lens)



Immunohistochemical of paraffin-embedded human breast cancer using Catalog No:115033(SDHC antibody) at dilution of 1:100

SDHC antibody



Catalog Number: 115033

(under 40x lens)