

Product name

CIT antibody

Specificity

human, mouse, rat; other species not tested.

Antibody description

CIT Rabbit Polyclonal antibody. Positive IF detected in HepG2. Positive WB detected in A431 cells, HeLa cells, mouse brain tissue. Observed molecular weight by Western-blot: 230kd,177kd

Preparation

This antibody was obtained by immunization of Peptide (Accession Number: NM_007174). Purification method: Antigen affinity purified.

Formulation

PBS with 0.02% sodium azide and 50% glycerol pH 7.3.

Storage

Store at -20°C. DO NOT ALIQUOT

Clonality

Polyclonal

Ig Type

Rabbit IgG

Applications

ELISA, WB, IF

Dilutions

Recommended Dilution:

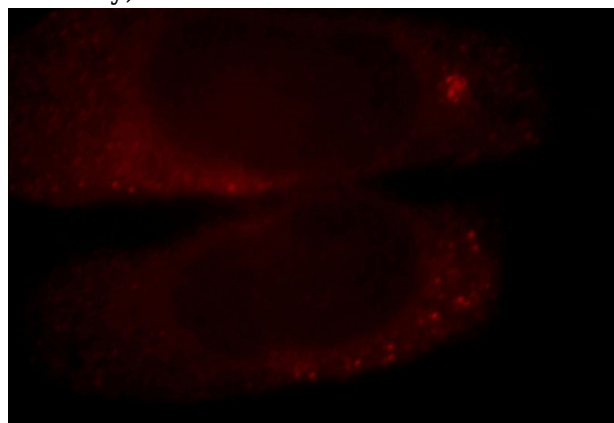
WB: 1:500-1:5000

IF: 1:10-1:100

Validations



A431 cells were subjected to SDS PAGE followed by western blot with Catalog No:109323(CIT antibody) at dilution of 1:300



Immunofluorescent analysis of HepG2 cells, using CIT antibody Catalog No:109323 at 1:25 dilution and Rhodamine-labeled goat anti-rabbit IgG (red).