

TUBGCP3 Polyclonal Antibody



Catalog Number: 164323

Product name

TUBGCP3 Polyclonal Antibody

Specificity

Human, Mouse, Rat

Antibody description

Polyclonal antibody to TUBGCP3

Preparation

Antigen: Recombinant fusion protein containing a sequence corresponding to amino acids 1-250 of human TUBGCP3 (NP_001273207.1).

Formulation

PBS with 0.02% sodium azide, 50% glycerol, pH7.3.

Storage

Store at -20°C. Avoid freeze / thaw cycles.

Clonality

Polyclonal

Ig Type

Rabbit IgG

Applications

WB, IHC, IF

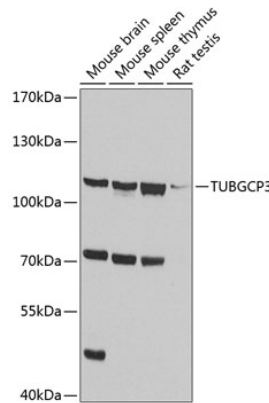
Dilutions

WB 1:500 - 1:2000

IHC 1:50 - 1:100

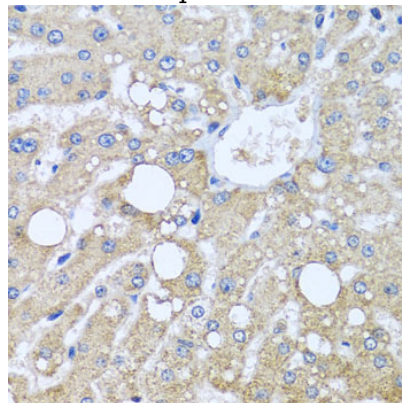
IF 1:50 - 1:100

Validations



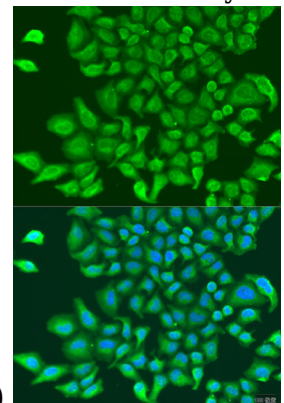
Western blot - TUBGCP3 Polyclonal Antibody

Western blot analysis of extracts of various cell lines, using TUBGCP3 antibody at 1:1000 dilution. Secondary antibody: HRP Goat Anti-Rabbit IgG (H+L) at 1:10000 dilution. Lysates/proteins: 25ug per lane. Blocking buffer: 3% nonfat dry milk in TBST. Detection: ECL Basic Kit. Exposure time: 30s.



Immunohistochemistry - TUBGCP3 Polyclonal Antibody

Immunohistochemistry of paraffin-embedded human liver injury using TUBGCP3 antibody at



dilution of 1:100 (40x lens).

TUBGCP3 Polyclonal Antibody



Catalog Number: 164323

Immunofluorescence - TUBGCP3 Polyclonal
Antibody

Immunofluorescence analysis of U2OS cells using
TUBGCP3 antibody at dilution of 1:100. Blue:
DAPI for nuclear staining.