

# ODC1 antibody

Catalog Number: 113323

## Product name

ODC1 antibody

## Specificity

Human; other species not tested.

## Antibody description

ODC1 Rabbit Polyclonal antibody. Positive WB detected in RAW264.7 cells. Positive IHC detected in human prostate hyperplasia tissue, human prostate cancer tissue.

## Preparation

This antibody was obtained by immunization of ODC1 recombinant protein (Accession Number: NM\_001287189). Purification method: Antigen affinity purified.

## Formulation

PBS with 0.02% sodium azide and 50% glycerol pH 7.3.

## Storage

Store at -20°C. DO NOT ALIQUOT

## Clonality

Polyclonal

## Ig Type

Rabbit IgG

## Applications

ELISA, WB, IHC

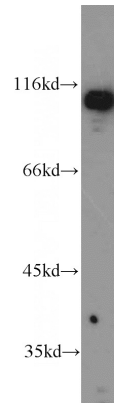
## Dilutions

Recommended Dilution:

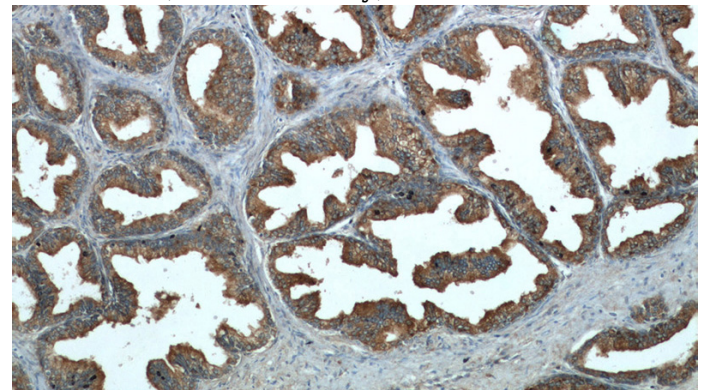
WB: 1:500-1:5000

IHC: 1:20-1:200

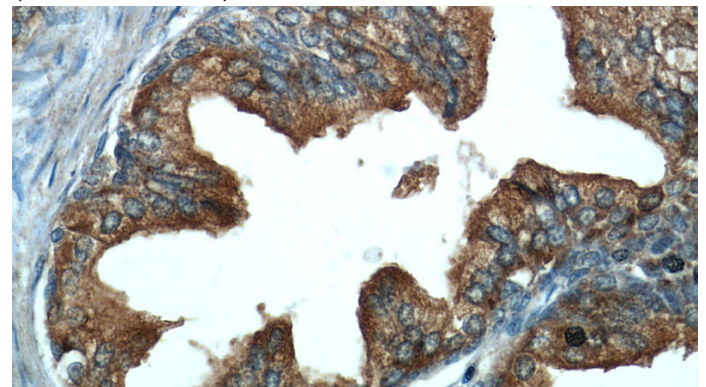
## Validations



RAW264.7 cells were subjected to SDS PAGE followed by western blot with Catalog No:113323(ODC1 antibody) at dilution of 1:1000



Immunohistochemical of paraffin-embedded human prostate hyperplasia using Catalog No:113323(ODC1 antibody) at dilution of 1:50 (under 10x lens)



Immunohistochemical of paraffin-embedded human prostate hyperplasia using Catalog No:113323(ODC1 antibody) at dilution of 1:50 (under 40x lens)