

LRP5 antibody

Catalog Number: 112323

Product name

LRP5 antibody

IHC: 1:20-1:200

IF: 1:50-1:500

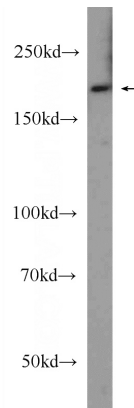
Specificity

Human; other species not tested.

Validations

Antibody description

LRP5 Rabbit Polyclonal antibody. Positive IHC detected in human liver cancer tissue, human hepat°Cirrhosis tissue. Positive IF detected in HeLa cells. Positive WB detected in HeLa cells. Observed molecular weight by Western-blot: 200 kDa



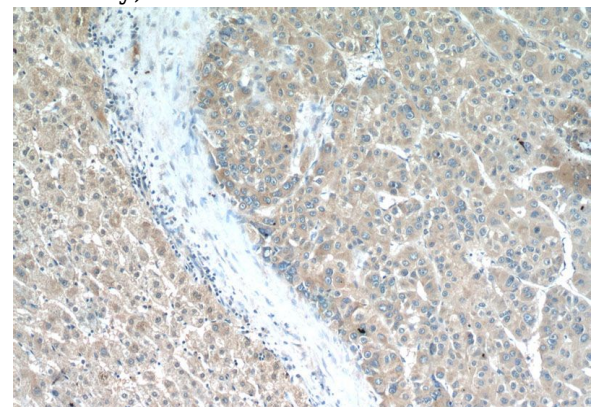
Preparation

This antibody was obtained by immunization of LRP5 recombinant protein (Accession Number: NM_002335). Purification method: Antigen affinity purified.

HeLa cells were subjected to SDS PAGE followed by western blot with Catalog No:112323(LRP5 Antibody) at dilution of 1:600

Formulation

PBS with 0.1% sodium azide and 50% glycerol pH 7.3.



Storage

Store at -20°C. DO NOT ALIQUOT

Clonality

Polyclonal

Immunohistochemistry of paraffin-embedded human liver cancer tissue slide using Catalog No:112323(LRP5 Antibody) at dilution of 1:50 (under 10x lens)

Ig Type

Rabbit IgG

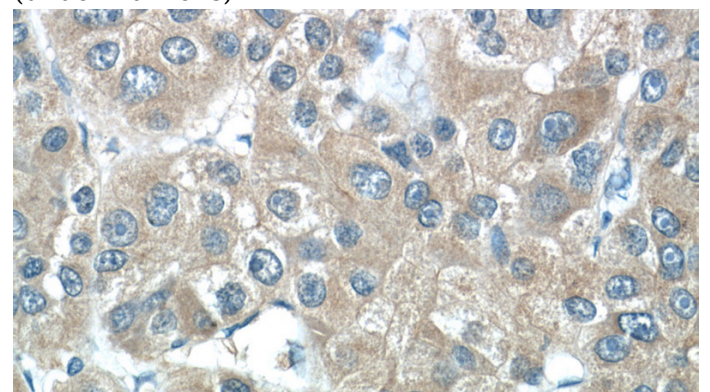
Applications

ELISA, WB, IHC, IF

Dilutions

Recommended Dilution:

WB: 1:200-1:2000

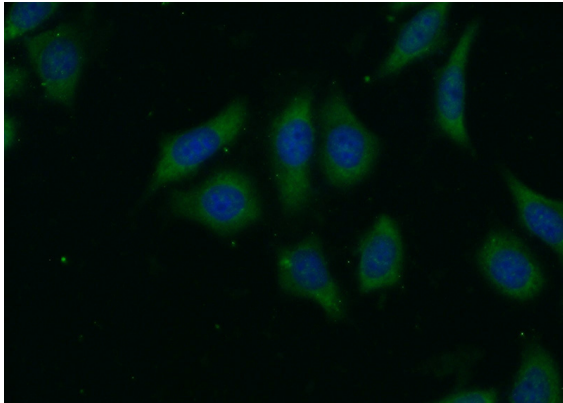


Immunohistochemistry of paraffin-embedded

LRP5 antibody

Catalog Number: 112323

human liver cancer tissue slide using Catalog No:112323(LRP5 Antibody) at dilution of 1:50 (under 40x lens)



Immunofluorescent analysis of (-20oc Ethanol) fixed HeLa cells using Catalog No:112323(LRP5 Antibody) at dilution of 1:50 and Alexa Fluor 488-conjugated AffiniPure Goat Anti-Rabbit IgG(H+L)