

# Anti-OSBPL1A antibody



Catalog Number: 175623

## Product name

Anti-OSBPL1A antibody

## Specificity

Human, Mouse, Rat, Dog, Pig, Cow, Sheep

## Antibody description

Rabbit polyclonal antibody to OSBPL1A

## Preparation

This antigen of this antibody was klh conjugated synthetic peptide derived from human orp1 851-950/950

## Formulation

Liquid, 0.01M TBS(pH7.4) with 1% BSA, 0.03% Proclin300 and 50% Glycerol.

## Storage

Store at -20°C for one year. Avoid repeated freeze/thaw cycles. The lyophilized antibody is stable at room temperature for at least one month and for greater than a year when kept at -20°C. When reconstituted in sterile pH 7.4 0.01M PBS or diluent of antibody the antibody is stable for at least two weeks at 2-4°C.

## Clonality

Polyclonal

## Ig Type

Rabbit IgG

## Applications

WB

## Dilutions

WB:1:500-2000

## Validations

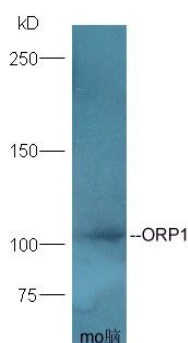


Fig1: Protein: brain(mouse) lystes at 40ug;; Primary: Anti-ORP1 at 1:300;; Secondary: HRP conjugated Goat-Anti-Rabbit IgG(bse-0295G-HRP) at 1: 5000;; ECL excited the fluorescence;; Predicted band size :108 kD; Observed band size :108 kD