

# Anti-CD28 antibody



Catalog Number: 104623

## Product name

Anti-CD28 antibody

## Specificity

Human CD28

## Antibody description

Rabbit monoclonal to CD28

## Preparation

This antibody was obtained from a rabbit immunized with purified, recombinant Human CD28 (rh CD28; P10747-1; Met1-Pro152) and conjugated with FITC under optimum conditions, the unreacted FITC was removed.

## Formulation

Aqueous solution containing 0.5% BSA and 0.09% sodium azide

## Storage

This antibody is stable for 12 months from date of receipt when stored at 2°C-8°C. Protected from prolonged exposure to light. Do not freeze ! Sodium azide is toxic to cells and should be disposed of properly. Flush with large volumes of water during disposal.

## Clonality

Monoclonal

## Ig Type

Rabbit IgG

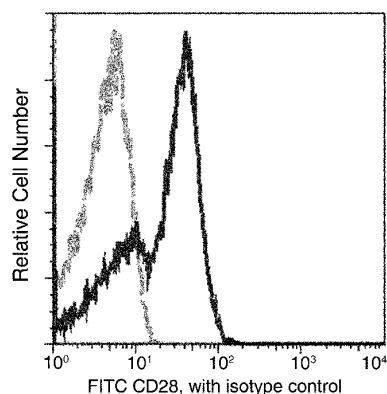
## Applications

FCM

## Dilutions

FCM

## Validations



CD28 Antibody (FITC), Rabbit MAb, Flow Cytometry

Flow cytometric analysis of Human CD28 expression on human whole blood lymphocytes. Cells were stained with FITC-conjugated anti-Human CD28. The fluorescence histograms were derived from gated events with the forward and side light-scatter characteristics of viable lymphocytes.