

IFITM2 antibody



Catalog Number: 111623

Product name

IFITM2 antibody

WB: 1:1000-1:10000

IP: 1:200-1:1000

Specificity

Human; other species not tested.

IHC: 1:20-1:200

IF: 1:20-1:200

Antibody description

IFITM2 Rabbit Polyclonal antibody. Positive WB detected in MCF-7 cells, human lung tissue. Positive IP detected in HepG2 cells. Positive IHC detected in human breast cancer tissue, human ovary tumor tissue. Positive IF detected in HepG2 cells. Observed molecular weight by Western-blot: 15kd

Preparation

This antibody was obtained by immunization of IFITM2 recombinant protein (Accession Number: NM_006435). Purification method: Antigen affinity purified.

Formulation

PBS with 0.1% sodium azide and 50% glycerol pH 7.3.

Storage

Store at -20°C. DO NOT ALIQUOT

Clonality

Polyclonal

Ig Type

Rabbit IgG

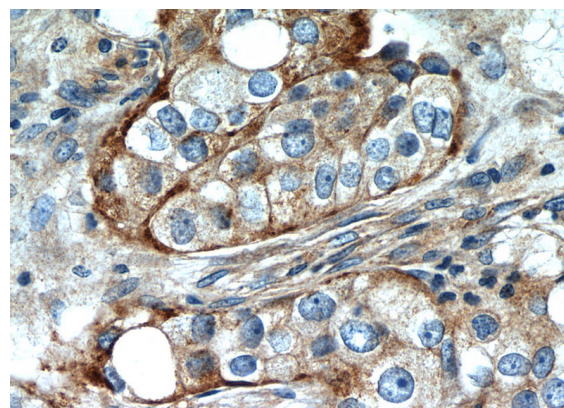
Applications

ELISA, IP, IHC, IF, WB

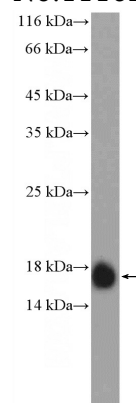
Dilutions

Recommended Dilution:

Validations



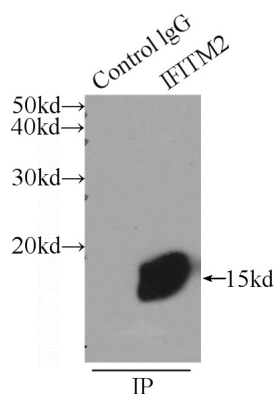
Immunohistochemistry of paraffin-embedded human breast cancer slide using Catalog No:111623(IFITM2 Antibody) at dilution of 1:50



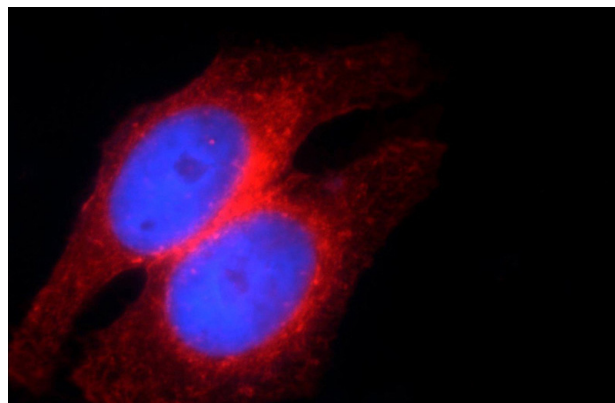
MCF-7 cells were subjected to SDS PAGE followed by western blot with Catalog No:111623(IFITM2 Antibody) at dilution of 1:2000

IFITM2 antibody

Catalog Number: 111623



IP Result of anti-IFITM2 (IP:Catalog No:111623, 3ug; Detection:Catalog No:111623 1:300) with HepG2 cells lysate 1720ug.



Immunofluorescent analysis of HepG2 cells using Catalog No:111623(IFITM2 Antibody) at dilution of 1:50 and Rhodamine-Goat anti-Rabbit IgG