

# Human 14-3-3 epsilon/YWHAE recombinant protein



Catalog Number: 501623

## General Information

### Protein Construction

A DNA sequence encoding the human YWHAE (NP\_006752.1) (Met 1-Gln 255) was expressed, with two additional amino acids (Gly & Pro) at the N-terminus.

### Organism

Human

### Expression Host

E. coli

## QC Testing

### Purity

> 96 % as determined by SDS-PAGE

### Endotoxin

Please contact us for more information.

### Stability

Samples are stable for up to twelve months from date of receipt at -70°C

### Predicted N terminal

Gly

### Molecular Mass

The recombinant human YWHAE consists of 257 amino acids and has a predicted molecular mass of 29.4 kDa as estimated in SDS-PAGE under

reducing conditions.

### Formulation

Lyophilized from sterile 20mM Tris, 150mM NaCl, 0.25mM DTT, 25% glycerol, 0.5mM GSH, pH 7.5

1. 5 % trehalose and mannitol are added as protectants before lyophilization.

2. Please contact us for any concerns or special requirements.

## Usage Guide

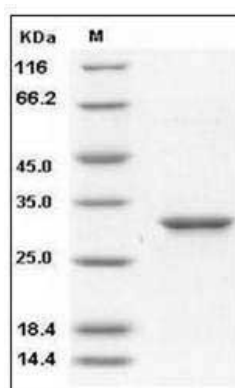
### Storage

Store it under sterile conditions at -20°C to -80°C. It is recommended that the protein be aliquoted for optimal storage. Avoid repeated freeze-thaw cycles.

### Reconstitution

Adding sterile water, prepare a stock solution of 0.25 mg/ml. Concentration is measured by UV-Vis.

### SDS-PAGE



Human 14-3-3 epsilon / YWHAE Protein SDS-PAGE