

# ASF1A antibody



Catalog Number: 108223

## Product name

ASF1A antibody

## Specificity

Human, Mouse, Rat; other species not tested.

## Antibody description

ASF1A Rabbit Polyclonal antibody. Positive IF detected in NIH/3T3 cells. Positive WB detected in NIH/3T3 cells, HeLa cells. Observed molecular weight by Western-blot: 20-23 kDa

## Preparation

This antibody was obtained by immunization of ASF1A recombinant protein (Accession Number: NM\_014034). Purification method: Antigen affinity purified.

## Formulation

PBS with 0.02% sodium azide and 50% glycerol pH 7.3.

## Storage

Store at -20°C. DO NOT ALIQUOT

## Clonality

Polyclonal

## Ig Type

Rabbit IgG

## Applications

ELISA, WB, IF

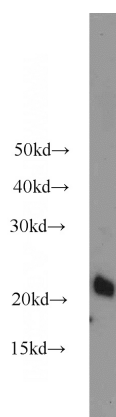
## Dilutions

Recommended Dilution:

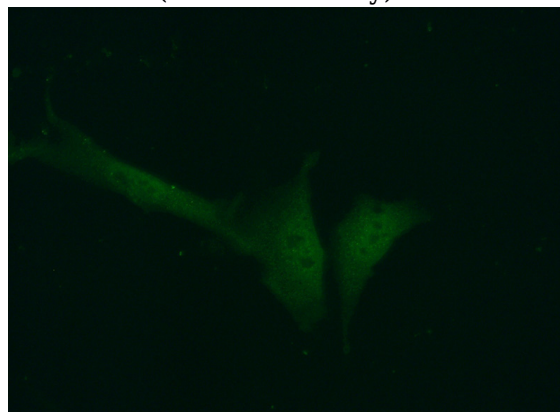
WB: 1:500-1:5000

IF: 1:50-1:500

## Validations



NIH/3T3 cells were subjected to SDS PAGE followed by western blot with Catalog No:108223(ASF1A antibody) at dilution of 1:1000



Immunofluorescent analysis of (10% Formaldehyde) fixed NIH/3T3 cells using Catalog No:108223(ASF1A Antibody) at dilution of 1:50 and Alexa Fluor 488-conjugated AffiniPure Goat Anti-Rabbit IgG(H+L)