

# LILRA2 antibody

Catalog Number: 112223

## Product name

LILRA2 antibody

## Specificity

Human; other species not tested.

## Antibody description

LILRA2 Rabbit Polyclonal antibody. Positive WB detected in human liver tissue. Positive IHC detected in human tonsillitis tissue. Observed molecular weight by Western-blot: 53kd

## Preparation

This antibody was obtained by immunization of LILRA2 recombinant protein (Accession Number: NM\_006866). Purification method: Antigen affinity purified.

## Formulation

PBS with 0.02% sodium azide and 50% glycerol pH 7.3.

## Storage

Store at -20°C. DO NOT ALIQUOT

## Clonality

Polyclonal

## Ig Type

Rabbit IgG

## Applications

ELISA, WB, IHC

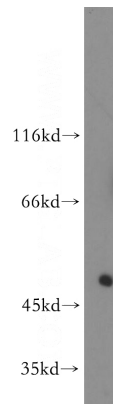
## Dilutions

Recommended Dilution:

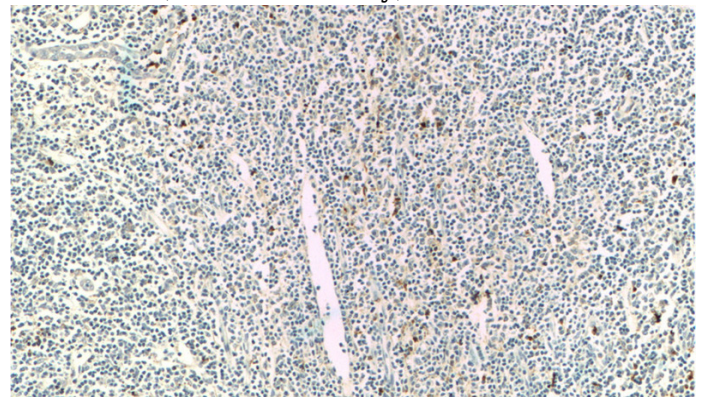
WB: 1:200-1:2000

IHC: 1:20-1:200

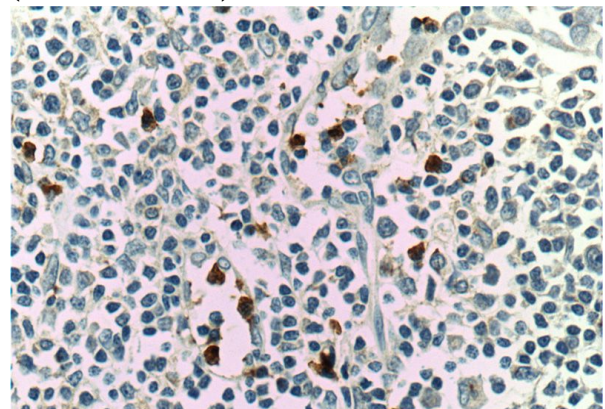
## Validations



human liver tissue were subjected to SDS PAGE followed by western blot with Catalog No:112223(LILRA2 antibody) at dilution of 1:500



Immunohistochemistry of paraffin-embedded human tonsillitis tissue slide using Catalog No:112223(LILRA2 Antibody) at dilution of 1:200 (under 10x lens)



Immunohistochemistry of paraffin-embedded human tonsillitis tissue slide using Catalog No:112223(LILRA2 Antibody) at dilution of 1:200 (under 40x lens)