

# Anti-KRT34 antibody



Catalog Number: 141223

## Product name

Anti-KRT34 antibody

## Specificity

Human KRT34

## Antibody description

Rabbit Polyclonal to Human KRT34

## Preparation

Produced in rabbits immunized with a synthetic peptide corresponding to the center region of the Human KRT34, and purified by antigen affinity chromatography.

## Formulation

0.2  $\mu$ m filtered solution in PBS

## Storage

This antibody can be stored at 2°C-8°C for one month without detectable loss of activity. Antibody products are stable for twelve months from date of receipt when stored at -20°C to -80°C.

Preservative-Free.

Sodium azide is recommended to avoid contamination (final concentration 0.05%-0.1%). It

is toxic to cells and should be disposed of properly. Avoid repeated freeze-thaw cycles.

## Clonality

Polyclonal

## Ig Type

Rabbit IgG

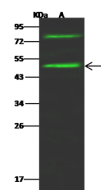
## Applications

WB

## Dilutions

WB: 5-20  $\mu$ g/ml

## Validations



Lanes	A
Items	
Sample (whole cell lysate)	HeLa
Sample Volume ( $\mu$ g/lane)	30
Gel	13% SDS-PAGE reducing gel
Recommended Concentration	5-20 $\mu$ g/ml
Secondary Antibody	Dylight 800-labeled Antibody to Rabbit IgG (H+L), at 1:5000 dilution.
Developed using Odyssey imaging system.	
Explanation	Predicted band size : 49 kDa Observed band size : 49 kDa Additional bands at : 32 kDa, 36 kDa and 78 kDa (We are unsure as to the identity of these extra bands.)

Human KRT34 Western blot (WB) 14929