

# EHD1 antibody

Catalog Number: 110223

## Product name

EHD1 antibody

## Immunogen

[Human EHD1 Recombinant protein \(GST tag\)](#)

## Specificity

Human, Mouse, Rat; other species not tested.

## Antibody description

EHD1 Rabbit Polyclonal antibody. Positive IF detected in HeLa cells. Positive WB detected in mouse brain tissue, HeLa cells, mouse lung tissue, mouse testis tissue, rat lung tissue. Positive IP detected in mouse testis tissue. Observed molecular weight by Western-blot: 61 kDa

## Preparation

This antibody was obtained by immunization of EHD1 recombinant protein (Accession Number: NM\_006795). Purification method: Antigen affinity purified.

## Formulation

PBS with 0.1% sodium azide and 50% glycerol pH 7.3.

## Storage

Store at -20°C. DO NOT ALIQUOT

## Clonality

Polyclonal

## Ig Type

Rabbit IgG

## Applications

ELISA, WB, IF, IP

## Dilutions

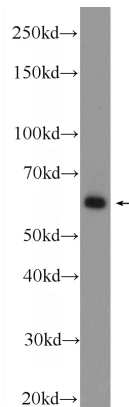
Recommended Dilution:

WB: 1:500-1:5000

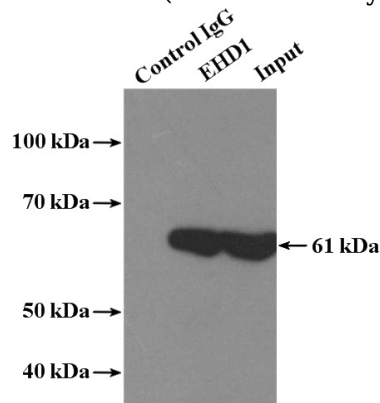
IP: 1:200-1:2000

IF: 1:10-1:100

## Validations



mouse brain tissue were subjected to SDS PAGE followed by western blot with Catalog No:110223(EHD1 Antibody) at dilution of 1:1000

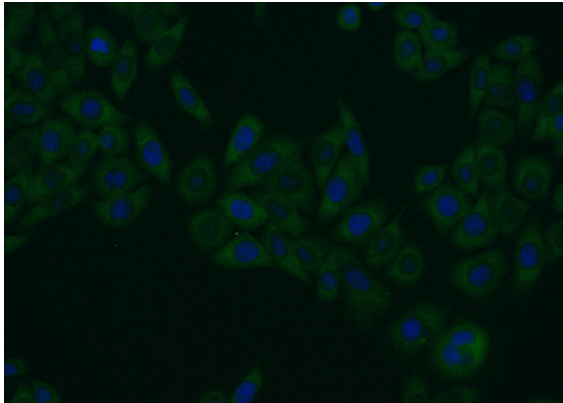


IP Result of anti-EHD1 (IP:Catalog No:110223, 4ug; Detection:Catalog No:110223 1:700) with mouse testis tissue lysate 4000ug.

# EHD1 antibody

Catalog Number: 110223

---



Immunofluorescent analysis of HeLa cells using Catalog No:110223(EHD1 Antibody) at dilution of 1:25 and Alexa Fluor 488-conjugated AffiniPure Goat Anti-Rabbit IgG(H+L)