

Anti-Phospho-NFAT2 (Ser237) Rabbit antibody



Catalog Number: 166923

Product name

Anti-Phospho-NFAT2 (Ser237) Rabbit antibody

Ig Type

Rabbit IgG

Specificity

Human

Applications

WB, FC

Antibody description

Phospho-NFAT2 (Ser237) Rabbit polyclonal antibody

Dilutions

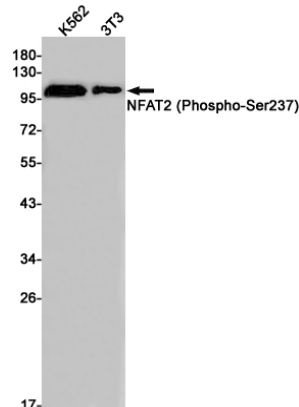
WB: 1/1000

FC: 1/50

Preparation

Antigen: A synthetic phosphopeptide corresponding to residues surrounding Ser237 of human NFAT2

Validations



Formulation

Supplied in 50nM Tris-Glycine(pH 7.4), 0.15M NaCl, 40%Glycerol, 0.01% sodium azide and 0.05% BSA.

Western blot detection of NFAT2 (Phospho-Ser237) in K562,3T3 cell lysates using NFAT2 (Phospho-Ser237) Rabbit pAb(1:1000 diluted).Predicted band size:101kDa.Observed band size:101kDa.

Storage

Store at -20°C. Stable for 12 months from date of receipt.

Clonality

Polyclonal