

# KL Polyclonal Antibody

Catalog Number: 160923

## Product name

KL Polyclonal Antibody

## Specificity

Human, Mouse, Rat

## Antibody description

Polyclonal antibody to KL

## Preparation

Antigen: Recombinant fusion protein containing a sequence corresponding to amino acids 1-200 of human KL (NP\_004786.2).

## Formulation

PBS with 0.02% sodium azide, 50% glycerol, pH7.3.

## Storage

Store at -20°C. Avoid freeze / thaw cycles.

## Clonality

Polyclonal

## Ig Type

Rabbit IgG

## Applications

WB, IHC, IF

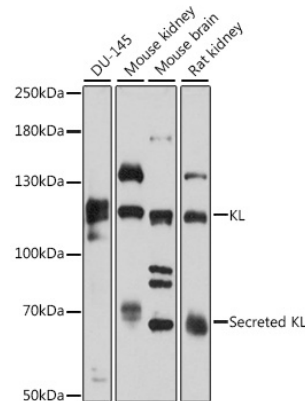
## Dilutions

WB 1:500 - 1:2000

IHC 1:50 - 1:200

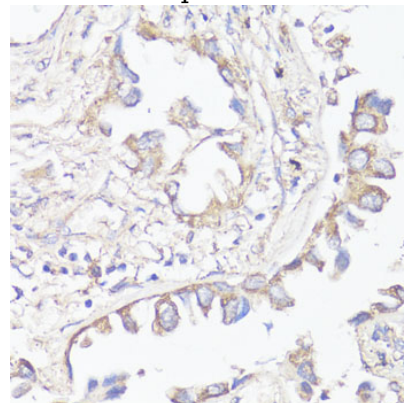
IF 1:50 - 1:200

## Validations



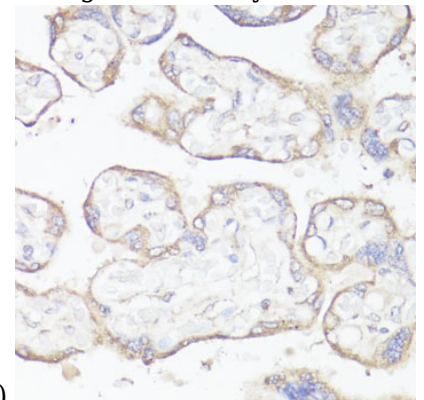
## Western blot - KL Polyclonal Antibody

Western blot analysis of extracts of various cell lines, using KL antibody at 1:3000 dilution. Secondary antibody: HRP Goat Anti-Rabbit IgG (H+L) at 1:10000 dilution. Lysates/proteins: 25ug per lane. Blocking buffer: 3% nonfat dry milk in TBST. Detection: ECL Basic Kit. Exposure time: 5s.



## Immunohistochemistry - KL Polyclonal Antibody

Immunohistochemistry of paraffin-embedded human lung cancer using KL antibody at dilution



of 1:200 (40x lens).

# KL Polyclonal Antibody

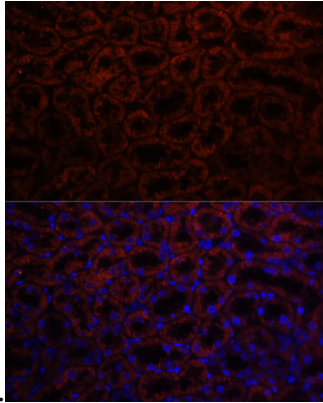


Catalog Number: 160923

---

## Immunohistochemistry - KL Polyclonal Antibody

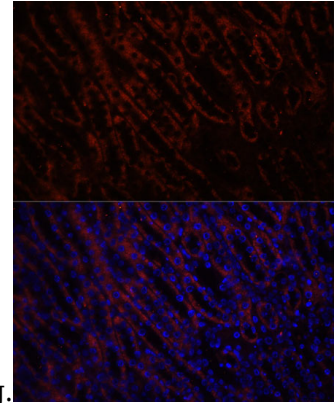
Immunohistochemistry of paraffin-embedded human placenta using KL antibody at dilution of



1:200 (40x lens).

## Immunofluorescence - KL Polyclonal Antibody

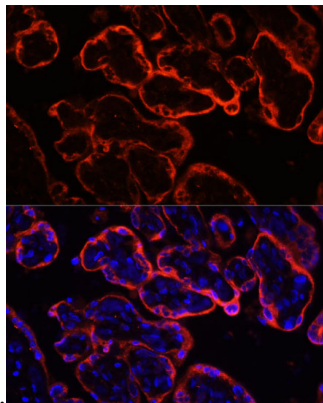
Immunofluorescence analysis of human placenta using KL antibody at dilution of 1:100. Blue: DAPI



for nuclear staining.

## Immunofluorescence - KL Polyclonal Antibody

Immunofluorescence analysis of rat kidney using KL antibody at dilution of 1:100. Blue: DAPI for



nuclear staining.

## Immunofluorescence - KL Polyclonal Antibody

Immunofluorescence analysis of mouse kidney using KL antibody at dilution of 1:100. Blue: DAPI for nuclear staining.