

# SP110 antibody

Catalog Number: 115523

## Product name

SP110 antibody

## Specificity

Human, Mouse; other species not tested.

## Antibody description

SP110 Rabbit Polyclonal antibody. Positive IP detected in HeLa cells. Positive WB detected in HeLa cells, A2780 cells, COLO 320 cells, human brain tissue, human testis tissue, Jurkat cells, K-562 cells, mouse brain tissue, mouse small intestine tissue, mouse spleen tissue, PC-3 cells. Observed molecular weight by Western-blot: 62-66 kDa

## Preparation

This antibody was obtained by immunization of SP110 recombinant protein (Accession Number: NM\_004510). Purification method: Antigen affinity purified.

## Formulation

PBS with 0.1% sodium azide and 50% glycerol pH 7.3.

## Storage

Store at -20°C. DO NOT ALIQUOT

## Clonality

Polyclonal

## Ig Type

Rabbit IgG

## Applications

ELISA, WB, IP

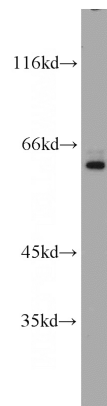
## Dilutions

Recommended Dilution:

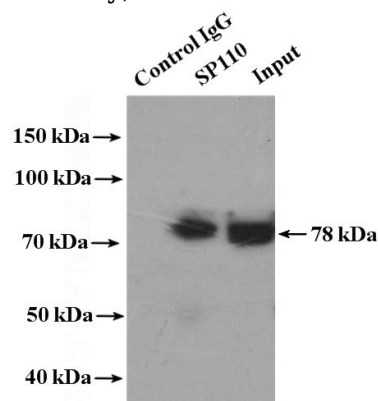
WB: 1:200-1:2000

IP: 1:200-1:2000

## Validations



HeLa cells were subjected to SDS PAGE followed by western blot with Catalog No:115523(SP110 antibody) at dilution of 1:800



IP Result of anti-SP110 (IP:Catalog No:115523, 4ug; Detection:Catalog No:115523 1:800) with HeLa cells lysate 4000ug.