

RAF1 antibody

Catalog Number: 114523

Product name

RAF1 antibody

Specificity

Human, Mouse; other species not tested.

Antibody description

RAF1 Rabbit Polyclonal antibody. Positive IHC detected in human prostate cancer tissue, human colon cancer tissue. Positive WB detected in Transfected HEK-293 cells. Observed molecular weight by Western-blot: 80 kDa

Preparation

This antibody was obtained by immunization of Peptide (Accession Number: NM_002880). Purification method: Antigen affinity purified.

Formulation

PBS with 0.1% sodium azide and 50% glycerol pH 7.3.

Storage

Store at -20°C. DO NOT ALIQUOT

Clonality

Polyclonal

Ig Type

Rabbit IgG

Applications

ELISA, WB, IHC

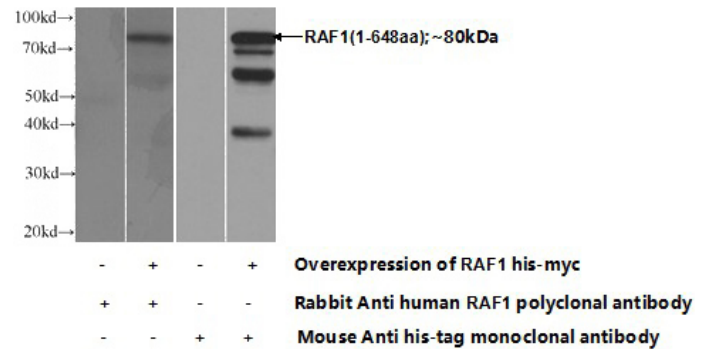
Dilutions

Recommended Dilution:

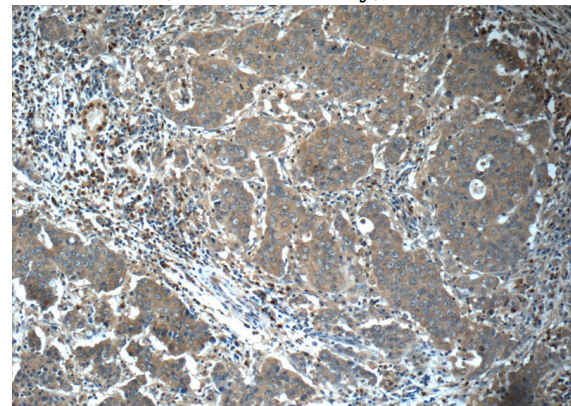
WB: 1:500-1:5000

IHC: 1:20-1:200

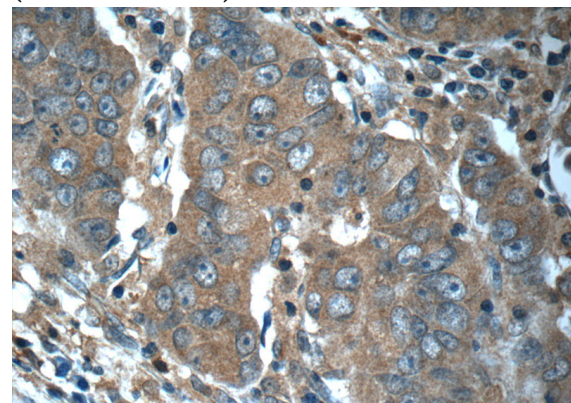
Validations



Transfected HEK-293 cells were subjected to SDS PAGE followed by western blot with Catalog No:114523(RAF1 Antibody) at dilution of 1:1000



Immunohistochemistry of paraffin-embedded human prostate cancer tissue slide using Catalog No:114523(RAF1 Antibody) at dilution of 1:50 (under 10x lens)



Immunohistochemistry of paraffin-embedded human prostate cancer tissue slide using Catalog No:114523(RAF1 Antibody) at dilution of 1:50 (under 40x lens)