

# OXA1L antibody

Catalog Number: 113523

## Product name

OXA1L antibody

## Specificity

Human, Mouse, Rat; other species not tested.

## Antibody description

OXA1L Rabbit Polyclonal antibody. Positive WB detected in HepG2 cells, L02 cells, NIH/3T3 cells. Positive IF detected in HepG2 cells. Observed molecular weight by Western-blot: 42 kDa

## Preparation

This antibody was obtained by immunization of OXA1L recombinant protein (Accession Number: NM\_005015). Purification method: Antigen affinity purified.

## Formulation

PBS with 0.02% sodium azide and 50% glycerol pH 7.3.

## Storage

Store at -20°C. DO NOT ALIQUOT

## Clonality

Polyclonal

## Ig Type

Rabbit IgG

## Applications

ELISA, WB, IF

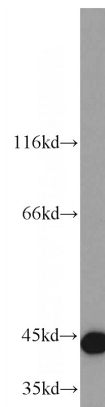
## Dilutions

Recommended Dilution:

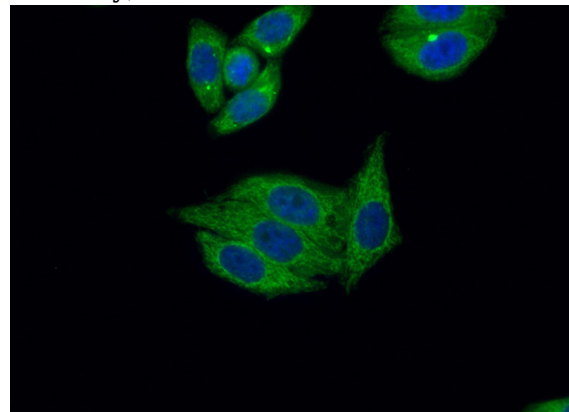
WB: 1:200-1:2000

IF: 1:20-1:200

## Validations



HepG2 cells were subjected to SDS PAGE followed by western blot with Catalog No:113523(OXA1L antibody) at dilution of 1:800



Immunofluorescent analysis of (10% Formaldehyde) fixed HepG2 cells using Catalog No:113523(OXA1L Antibody) at dilution of 1:50 and Alexa Fluor 488-conjugated AffiniPure Goat Anti-Rabbit IgG(H+L)