

METTL9 antibody



Catalog Number: 112523

Product name

METTL9 antibody

Specificity

Human, Mouse, Rat; other species not tested.

Antibody description

METTL9 Rabbit Polyclonal antibody. Positive WB detected in HEK-293 cells, HeLa cells, HepG2 cells. Positive IHC detected in human colon tissue, human liver cancer tissue. Positive IF detected in HepG2 cells. Observed molecular weight by Western-blot: 40-45 kDa

Preparation

This antibody was obtained by immunization of METTL9 recombinant protein (Accession Number: NM_016025). Purification method: Antigen affinity purified.

Formulation

PBS with 0.1% sodium azide and 50% glycerol pH 7.3.

Storage

Store at -20°C. DO NOT ALIQUOT

Clonality

Polyclonal

Ig Type

Rabbit IgG

Applications

ELISA, IF, IHC, WB

Dilutions

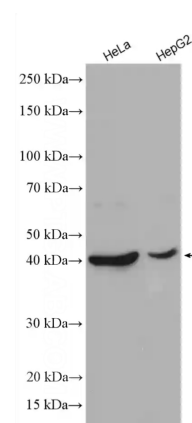
Recommended Dilution:

WB: 1:200-1:2000

IHC: 1:20-1:200

IF: 1:20-1:200

Validations



Various cell lysates were subjected to SDS PAGE followed by western blot with Catalog No:112523 (METTL9 antibody) at dilution of 1:1000 incubated at room temperature for 1.5 hours.