

# Anti-FBXL18 antibody



Catalog Number: 175123

## Product name

Anti-FBXL18 antibody

## Specificity

Human, Mouse, Rat

## Antibody description

Rabbit polyclonal antibody to FBXL18

## Preparation

This antigen of this antibody was synthetic peptide corresponding to human fbxl18 aa 750 to c terminus.

## Formulation

Liquid, 1\*PBS (pH7.4), 0.2% BSA, 50% Glycerol.  
Preservative: 0.05% Sodium Azide.

## Storage

Store at +4°C after thawing. Aliquot store at -20°C. Avoid repeated freeze / thaw cycles.

## Clonality

Polyclonal

## Ig Type

Rabbit IgG

## Applications

WB, IHC-P, FC

## Dilutions

WB: 1:500

IHC-P: 1:50-1:200

FC: 1:50-1:100

## Validations

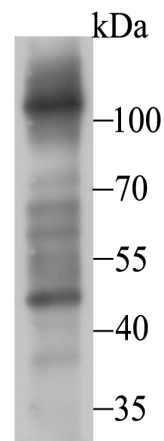


Fig1: Western blot analysis of FBXL18 on PC-3M cell lysate using anti-FBXL18 antibody at 1/500 dilution.

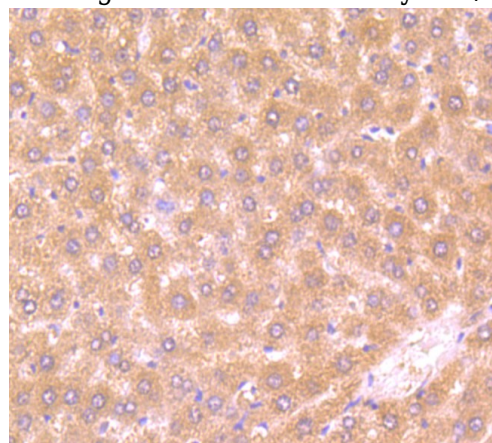


Fig2: Immunohistochemical analysis of paraffin-embedded rat liver tissue using anti-FBXL18 antibody. Counter stained with hematoxylin.

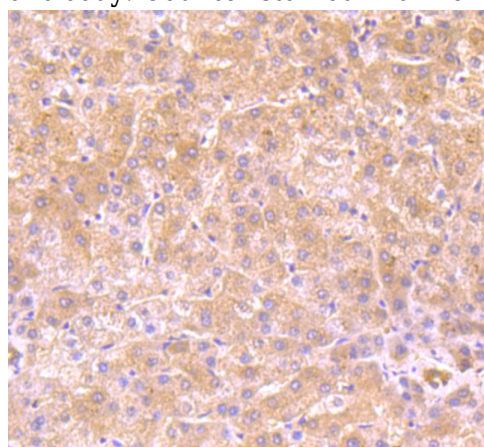


Fig3: Immunohistochemical analysis of paraffin-embedded human liver tissue using anti-FBXL18 antibody. Counter stained with hematoxylin.

# Anti-FBXL18 antibody



Catalog Number: 175123

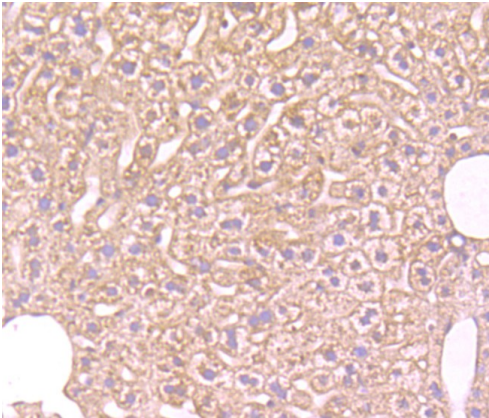


Fig4: Immunohistochemical analysis of paraffin-embedded mouse liver tissue using anti-FBXL18 antibody. Counter stained with hematoxylin.

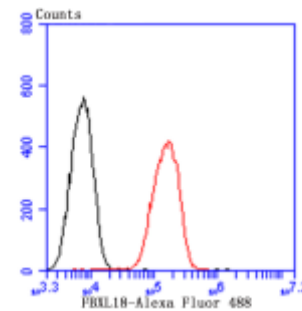


Fig5: Flow cytometric analysis of A549 cells with FBXL18 antibody at 1/100 dilution (red) compared with an unlabelled control (cells without incubation with primary antibody; black). Alexa Fluor 488-conjugated goat anti-rabbit IgG was used as the secondary antibody.