

# GPR21 antibody

Catalog Number: 111123

---

## Product name

GPR21 antibody

## Specificity

Human, Mouse, Rat; other species not tested.

## Antibody description

GPR21 Rabbit Polyclonal antibody. Positive IHC detected in human stomach tissue, human prostate hyperplasia tissue.

## Preparation

This antibody was obtained by immunization of GPR21 recombinant protein (Accession Number: NM\_005294). Purification method: Antigen affinity purified.

## Formulation

PBS with 0.1% sodium azide and 50% glycerol pH 7.3.

## Storage

Store at -20°C. DO NOT ALIQUOT

## Clonality

Polyclonal

## Ig Type

Rabbit IgG

## Applications

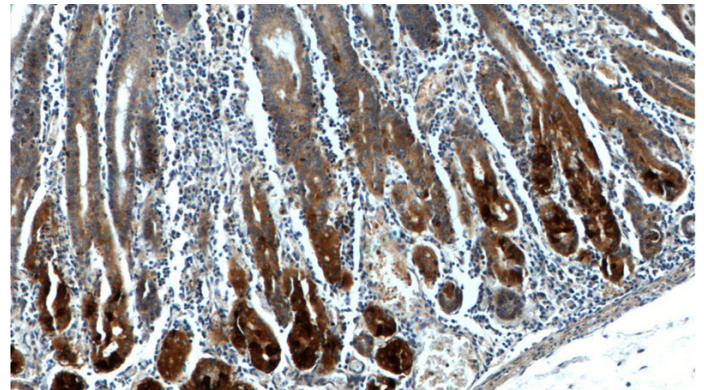
ELISA, IHC

## Dilutions

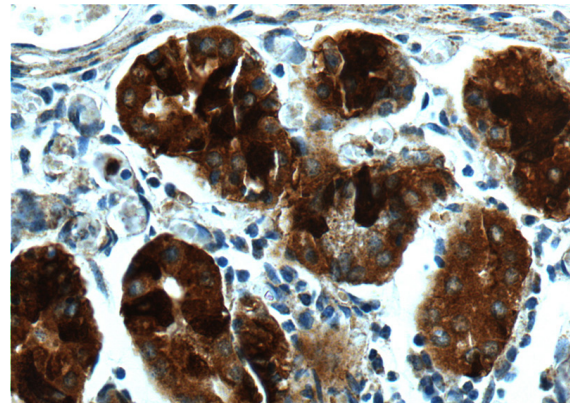
Recommended Dilution:

IHC: 1:50-1:500

## Validations



Immunohistochemistry of paraffin-embedded human stomach tissue slide using Catalog No:111123(GPR21 Antibody) at dilution of 1:100 (under 10x lens).



Immunohistochemistry of paraffin-embedded human stomach tissue slide using Catalog No:111123(GPR21 Antibody) at dilution of 1:100 (under 40x lens).