

# SUGT1 antibody

Catalog Number: 115823

## Product name

SUGT1 antibody

IP: 1:200-1:2000

IHC: 1:20-1:200

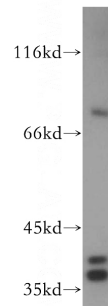
## Specificity

Human, Mouse, Rat; other species not tested.

## Validations

## Antibody description

SUGT1 Rabbit Polyclonal antibody. Positive IP detected in HEK-293 cells. Positive WB detected in Jurkat cells, HeLa cells, human kidney tissue. Positive IHC detected in human pancreas cancer tissue. Observed molecular weight by Western-blot: 38kd and 41kd



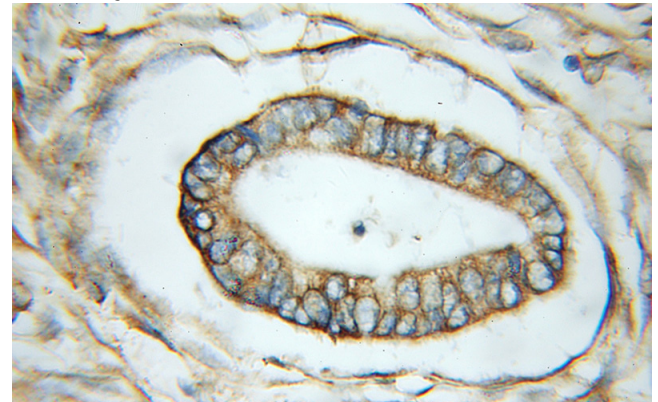
## Preparation

This antibody was obtained by immunization of SUGT1 recombinant protein (Accession Number: NM\_006704). Purification method: Antigen affinity purified.

Jurkat cells were subjected to SDS PAGE followed by western blot with Catalog No:115823(SUGT1 antibody) at dilution of 1:300

## Formulation

PBS with 0.1% sodium azide and 50% glycerol pH 7.3.



## Storage

Store at -20°C. DO NOT ALIQUOT

## Clonality

Polyclonal

Immunohistochemical of paraffin-embedded human pancreas cancer using Catalog No:115823(SUGT1 antibody) at dilution of 1:50 (under 10x lens)

## Ig Type

Rabbit IgG

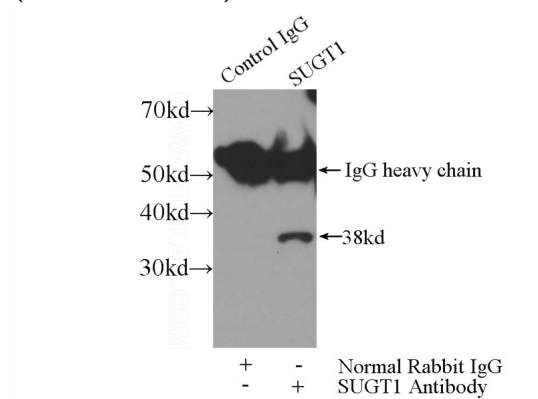
## Applications

ELISA, WB, IHC, IP

## Dilutions

Recommended Dilution:

WB: 1:1000-1:10000



IP Result of anti-SUGT1 (IP:Catalog No:115823,

# SUGT1 antibody



Catalog Number: 115823

---

3ug; Detection:Catalog No:115823 1:500) with HEK-293 cells lysate 3200ug.