

RPP38 antibody



Catalog Number: 114823

Product name

RPP38 antibody

Specificity

Human, Mouse, Rat; other species not tested.

Antibody description

RPP38 Rabbit Polyclonal antibody. Positive WB detected in HeLa cells, human kidney tissue, mouse liver tissue, rat kidney tissue, rat liver tissue. Observed molecular weight by Western-blot: 38 kDa

Preparation

This antibody was obtained by immunization of RPP38 recombinant protein (Accession Number: NM_001097590). Purification method: Antigen affinity purified.

Formulation

PBS with 0.1% sodium azide and 50% glycerol pH 7.3.

Storage

Store at -20°C. DO NOT ALIQUOT

Clonality

Polyclonal

Ig Type

Rabbit IgG

Applications

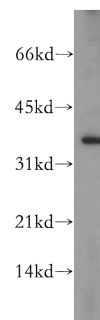
ELISA, WB

Dilutions

Recommended Dilution:

WB: 1:200-1:2000

Validations



HeLa cells were subjected to SDS PAGE followed by western blot with Catalog No:114823(RPP38 antibody) at dilution of 1:500