

JADE1 Polyclonal Antibody



Catalog Number: 164823

Product name

WB 1:500 - 1:2000

IF 1:10 - 1:100

JADE1 Polyclonal Antibody

Specificity

Human, Mouse

Antibody description

Polyclonal antibody to JADE1

Preparation

Antigen: Recombinant fusion protein containing a sequence corresponding to amino acids 210-509 of human JADE1 (NP_079176.2).

Formulation

PBS with 0.02% sodium azide, 50% glycerol, pH7.3.

Storage

Store at -20°C. Avoid freeze / thaw cycles.

Clonality

Polyclonal

Ig Type

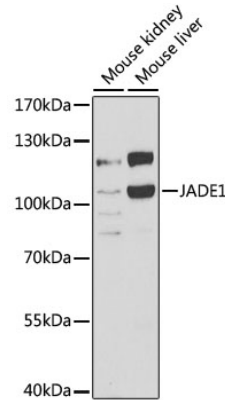
Rabbit IgG

Applications

WB, IF

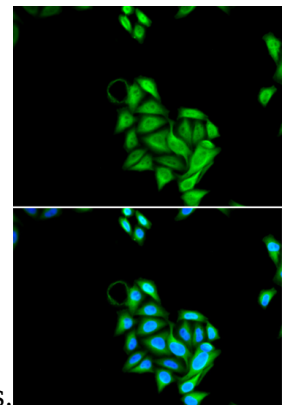
Dilutions

Validations



Western blot - JADE1 Polyclonal Antibody

Western blot analysis of extracts of various cell lines, using JADE1 antibody at 1:1000 dilution. Secondary antibody: HRP Goat Anti-Rabbit IgG (H+L) at 1:10000 dilution. Lysates/proteins: 25ug per lane. Blocking buffer: 3% nonfat dry milk in TBST. Detection: ECL



Basic Kit .Exposure time: 60s.

Immunofluorescence - JADE1 Polyclonal Antibody

Immunofluorescence analysis of U2OS cells using JADE1 antibody . Blue: DAPI for nuclear staining.