

# Anti-S100A12 antibody



Catalog Number: 102823

## Product name

Anti-S100A12 antibody

## Immunogen

[Human S100A12 recombinant protein](#)

## Specificity

Human S100A12 / CAGC

## Antibody description

Rabbit polyclonal to S100A12

## Preparation

Produced in rabbits immunized with purified, recombinant Human S100A12 (rh S100A12; NP\_005612.1; Met 1-Glu 92). S100A12 specific IgG was purified by human S100A12 affinity chromatography

## Formulation

0.2 µm filtered solution in PBS with 5% trehalose

## Storage

This antibody can be stored at 2°C-8°C for one month without detectable loss of activity. Antibody products are stable for twelve months from date of receipt when stored at -20°C to -80°C.

Preservative-Free.

Sodium azide is recommended to avoid contamination (final concentration 0.05%-0.1%). It is toxic to cells and should be disposed of properly. Avoid repeated freeze-thaw cycles.

## Clonality

Polyclonal

## Ig Type

Rabbit IgG

## Applications

ELISA, IHC-P

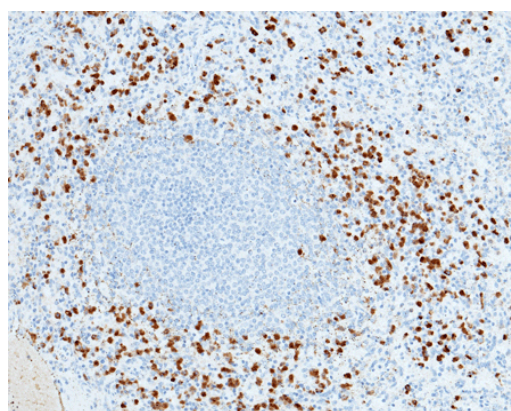
## Dilutions

ELISA: 0.1-0.2 µg/mL

This antibody can be used at 0.1-0.2 µg/mL with the appropriate secondary reagents to detect Human S100A12. The detection limit for Human S100A12 is approximately 0.00245 ng/well.

IHC-P: 0.1-1 µg/mL

## Validations



S100A12 / CAGC Antibody, Rabbit PAb, Antigen Affinity Purified, Immunohistochemistry

Immunochemical staining of human S100A12 in human spleen with rabbit polyclonal antibody (0.2 µg/mL, formalin-fixed paraffin embedded sections).