

Anti-Sox2 antibody



Catalog Number: 106423

Product name

Anti-Sox2 antibody

Specificity

Human Sox2

Antibody description

Rabbit monoclonal to Sox2

Preparation

This antibody was obtained from a rabbit immunized with a synthetic peptide corresponding to the N-terminus of the human Sox2.

Formulation

0.2 µm filtered solution in PBS

Storage

This antibody can be stored at 2°C-8°C for one month without detectable loss of activity. Antibody products are stable for twelve months from date of receipt when stored at -20°C to -80°C.

Preservative-Free.

Sodium azide is recommended to avoid contamination (final concentration 0.05%-0.1%). It is toxic to cells and should be disposed of

properly. Avoid repeated freeze-thaw cycles.

Clonality

Monoclonal

Ig Type

Rabbit IgG

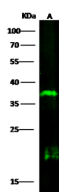
Applications

WB

Dilutions

WB: 5-10 µg/ml

Validations



Lanes	A
Items	
Sample (whole cell lysate)	HES59
Sample Volume (µg/lane)	30
Gel	13% SDS-PAGE reducing gel
Recommended Concentration	5-10µg/ml
Secondary Antibody	Dylight 800-labeled Antibody to Rabbit IgG (H+L), at 1:5000 dilution.
Explanation	Developed using Odyssey imaging system. Predicted band size : 34 kDa Observed band size : 37 kDa Additional bands at : 20 kDa(We are unsure as to the identity of these extra bands. They are possible non-specific bindings).

Sox2 Antibody, Rabbit MAb, Western blot