

# APOB antibody

Catalog Number: 108023

## Product name

APOB antibody

IHC: 1:20-1:200

IF: 1:20-1:200

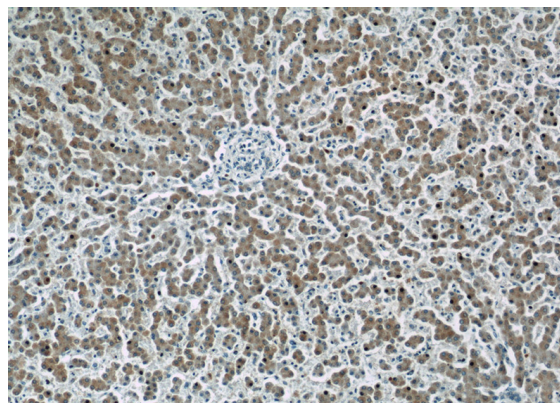
## Specificity

Human, Mouse; other species not tested.

## Validations

## Antibody description

APOB Rabbit Polyclonal antibody. Positive WB detected in mouse liver tissue, HEK-293 cells, HepG2 cells, L02 cells. Positive IHC detected in human liver tissue. Positive IF detected in HepG2 cells. Observed molecular weight by Western-blot: 130-150 kDa, 200-250 kDa



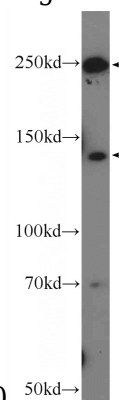
## Preparation

This antibody was obtained by immunization of Peptide (Accession Number: NM\_000384). Purification method: Antigen affinity purified.

Immunohistochemistry of paraffin-embedded human liver slide using Catalog No:108023(APOB

## Formulation

PBS with 0.02% sodium azide and 50% glycerol pH 7.3.



Antibody) at dilution of 1:50

## Storage

Store at -20°C. DO NOT ALIQUOT

mouse liver tissue were subjected to SDS PAGE followed by western blot with Catalog No:108023(APOB Antibody) at dilution of 1:600

## Clonality

Polyclonal

## Ig Type

Rabbit IgG

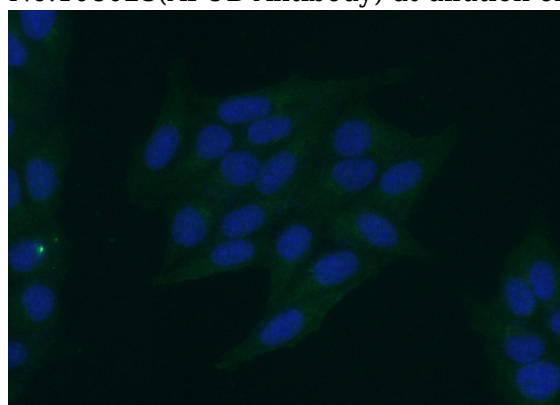
## Applications

ELISA, IHC, WB, IF

## Dilutions

Recommended Dilution:

WB: 1:200-1:2000



Immunofluorescent analysis of (-20oc Ethanol) fixed HepG2 cells using Catalog No:108023(APOB

# APOB antibody



Catalog Number: 108023

---

Antibody) at dilution of 1:50 and Alexa Fluor 488- conjugated AffiniPure Goat Anti-Rabbit IgG(H+L)