

# Anti-KDM4A Rabbit antibody



Catalog Number: 168023

## Product name

Anti-KDM4A Rabbit antibody

## Specificity

Human, Mouse, Rat

## Antibody description

KDM4A Rabbit monoclonal antibody

## Preparation

Antigen: A synthesized peptide derived from human KDM4A / JHDM3A / JMJD2A

## Formulation

Rabbit IgG in phosphate buffered saline , pH 7.4, 150mM NaCl, 0.02% sodium azide and 50% glycerol.

## Storage

Store at 4°C short term. Store at -20°C long term. Avoid freeze / thaw cycle.

## Clonality

Monoclonal

## Ig Type

Rabbit IgG

## Applications

WB, IHC-P, IP

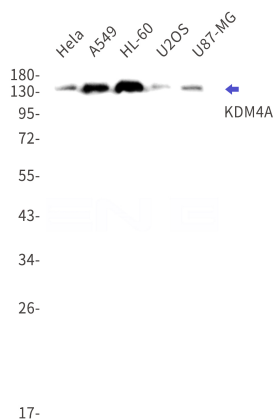
## Dilutions

WB: 1/500-1/2000

IHC: 1/50-1/200

IP: 1/60

## Validations



Western blot detection of KDM4A in HeLa, A549, HL-60, U2OS, U87-MG cell lysates using KDM4A Rabbit mAb (1:1000 diluted). Observed band size: 150 kDa.