

# Anti-ZNF875 antibody



Catalog Number: 176023

## Product name

Anti-ZNF875 antibody

## Specificity

Human

## Antibody description

Rabbit polyclonal antibody to ZNF875

## Preparation

This antigen of this antibody was the antiserum was produced against synthesized peptide derived from human hkr1. aa range:141-190

## Formulation

Liquid, Liquid in PBS containing 50% glycerol, 0.5% BSA and 0.02% sodium azide.

## Storage

Store at +4°C after thawing. Aliquot store at -20°C or -80°C. Avoid repeated freeze / thaw cycles.

## Clonality

Polyclonal

## Ig Type

Rabbit IgG

## Applications

WB, IHC-P, IF

## Dilutions

WB: 1:500-1:2000

IHC-P: 1:100-1:300

IF: 1:100-1:500

## Validations

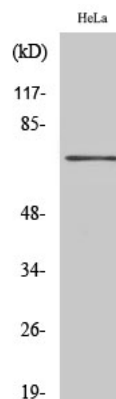


Fig1.; Western Blot analysis of various cells using HKR1 Polyclonal Antibody cells nucleus extracted by Minute TM Cytoplasmic and Nuclear Fractionation kit (SC-003, Inventbiotech, MN, USA).