

# SCYL2 antibody



Catalog Number: 115023

---

## Product name

SCYL2 antibody

## Specificity

human, mouse, rat; other species not tested.

## Antibody description

SCYL2 Rabbit Polyclonal antibody. Positive WB detected in NIH/3T3 cells, mouse uterus tissue. Observed molecular weight by Western-blot: 104kd

## Preparation

This antibody was obtained by immunization of SCYL2 recombinant protein (Accession Number: BC012387). Purification method: Antigen affinity purified.

## Formulation

PBS with 0.1% sodium azide and 50% glycerol pH 7.3.

## Storage

Store at -20°C. DO NOT ALIQUOT

## Clonality

Polyclonal

## Ig Type

Rabbit IgG

## Applications

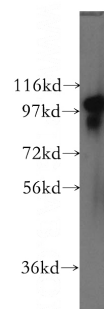
ELISA, WB

## Dilutions

Recommended Dilution:

WB: 1:500-1:5000

## Validations



NIH/3T3 cells were subjected to SDS PAGE followed by western blot with Catalog No:115023(SCYL2 antibody) at dilution of 1:500