

NBR1 antibody

Catalog Number: 113023

Product name

NBR1 antibody

Specificity

Human, Mouse, Rat, Monkey; other species not tested.

Antibody description

NBR1 Rabbit Polyclonal antibody. Positive WB detected in HeLa cells, A2780 cells, COS-7 cells, HepG2 cells, Jurkat cells, MCF7 cells. Positive IP detected in HeLa cells. Positive FC detected in HeLa cells. Positive IF detected in Hela cells. Positive IHC detected in human breast cancer tissue, human heart tissue, human skeletal muscle tissue. Observed molecular weight by Western-blot: 140 kDa

Preparation

This antibody was obtained by immunization of NBR1 recombinant protein (Accession Number: NM_001291571). Purification method: Antigen affinity purified.

Formulation

PBS with 0.02% sodium azide and 50% glycerol pH 7.3.

Storage

Store at -20°C. DO NOT ALIQUOT

Clonality

Polyclonal

Ig Type

Rabbit IgG

Applications

ELISA, WB, IHC, IF, IP, FC

Dilutions

Recommended Dilution:

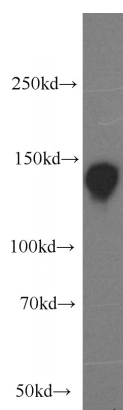
WB: 1:200-1:2000

IP: 1:200-1:2000

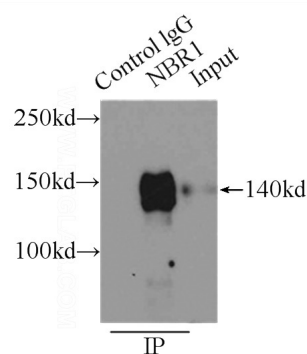
IHC: 1:20-1:200

IF: 1:10-1:100

Validations



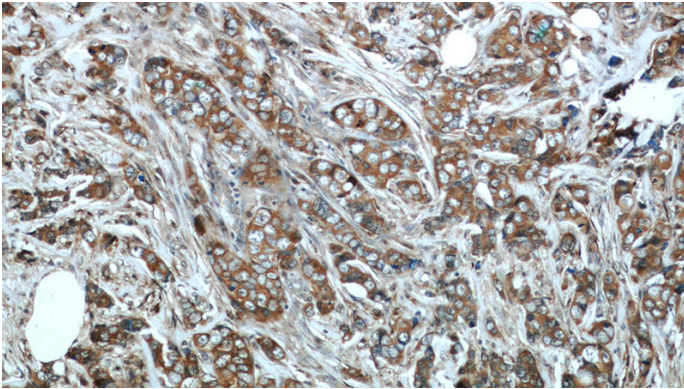
HeLa cells were subjected to SDS PAGE followed by western blot with Catalog No:113023(NBR1 antibody) at dilution of 1:1500



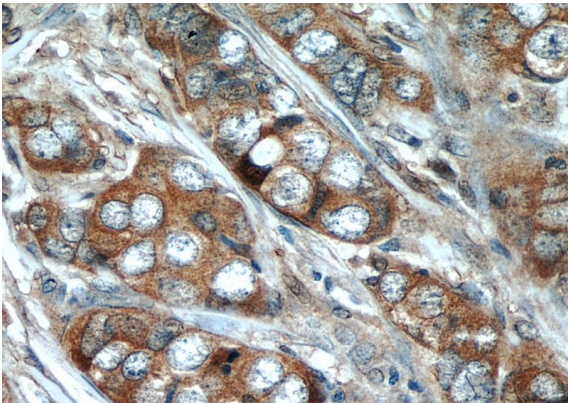
IP Result of anti-NBR1 (IP:Catalog No:113023, 4ug; Detection:Catalog No:113023 1:800) with HeLa cells lysate 2500ug.

NBR1 antibody

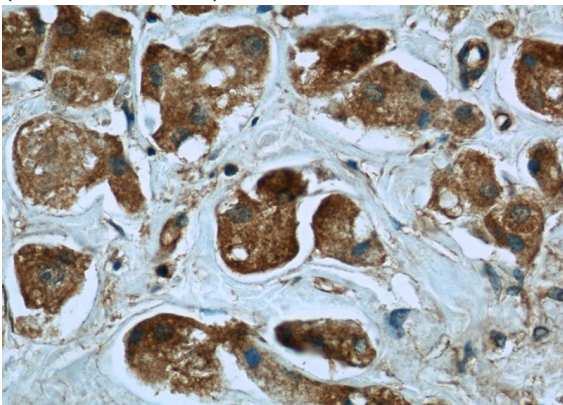
Catalog Number: 113023



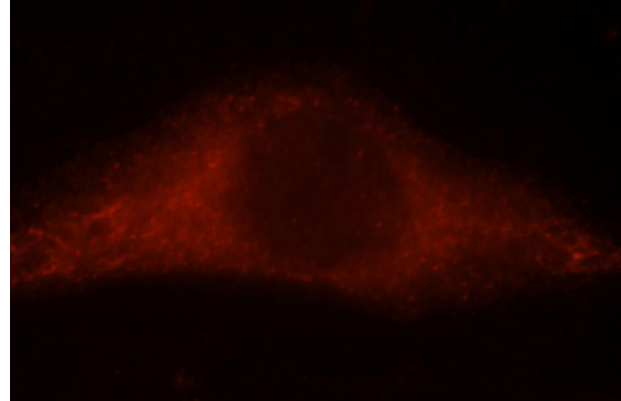
Immunohistochemical of paraffin-embedded human breast cancer using Catalog No:113023(NBR1 antibody) at dilution of 1:50 (under 10x lens)



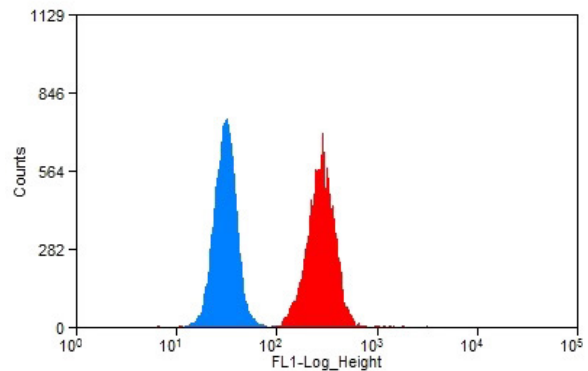
Immunohistochemical of paraffin-embedded human breast cancer using Catalog No:113023(NBR1 antibody) at dilution of 1:50 (under 40x lens)



Immunohistochemistry of paraffin-embedded human breast cancer slide using Catalog No:113023(NBR1 Antibody) at dilution of 1:50



Immunofluorescent analysis of HeLa cells, using NBR1 antibody Catalog No:113023 at 1:25 dilution and Rhodamine-labeled goat anti-rabbit IgG (red).



1X10⁶ HeLa cells were stained with 0.2ug NBR1 antibody (Catalog No:113023, red) and control antibody (blue). Fixed with 90% MeOH blocked with 3% BSA (30 min). Alexa Fluor 488-conjugated AffiniPure Goat Anti-Rabbit IgG(H+L) with dilution 1:1500.