

KDM1 antibody

Catalog Number: 112023

Product name

KDM1 antibody

IP: 1:200-1:2000

IHC: 1:20-1:200

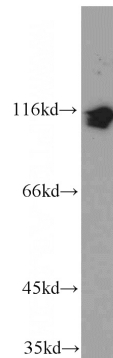
Specificity

Human, Mouse; other species not tested.

Validations

Antibody description

KDM1 Rabbit Polyclonal antibody. Positive WB detected in HT-1080 cells, HEK-293 cells, HeLa cells, Jurkat cells, MCF7 cells, NIH/3T3 cells, PC-3 cells. Positive IP detected in HeLa cells. Positive IHC detected in human testis tissue. Observed molecular weight by Western-blot: 110 kDa



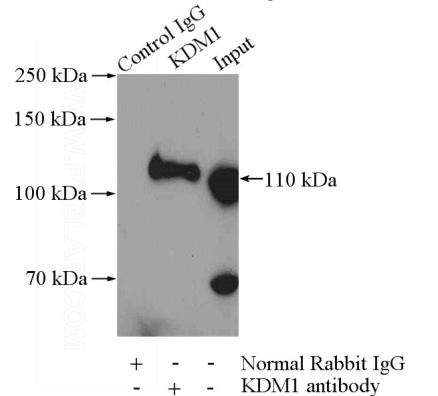
Preparation

This antibody was obtained by immunization of KDM1 recombinant protein (Accession Number: NM_001009999). Purification method: Antigen affinity purified.

HT-1080 cells were subjected to SDS PAGE followed by western blot with Catalog No:112023(KDM1 antibody) at dilution of 1:600

Formulation

PBS with 0.02% sodium azide and 50% glycerol pH 7.3.



Storage

Store at -20°C. DO NOT ALIQUOT

IP Result of anti-KDM1 (IP:Catalog No:112023, 4ug; Detection:Catalog No:112023 1:600) with HeLa cells lysate 2000ug.

Clonality

Polyclonal

Ig Type

Rabbit IgG

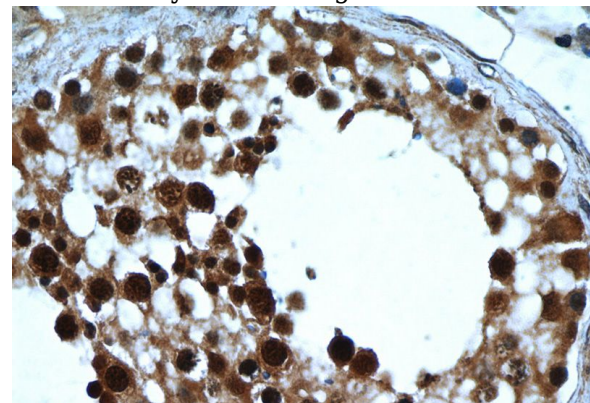
Applications

ELISA, WB, IP, IHC

Dilutions

Recommended Dilution:

WB: 1:500-1:5000



Immunohistochemistry of paraffin-embedded human testis tissue slide using Catalog

KDM1 antibody



Catalog Number: 112023

No:112023(KDM1 Antibody) at dilution of 1:50 (under 40x lens)