

Anti-p38 Rabbit antibody



Catalog Number: 166713

Product name

Rabbit IgG

Anti-p38 Rabbit antibody

Applications

Specificity

ICC/IF, WB, IHC-P, ELISA

Human, Mouse, Rat

Dilutions

Antibody description

IF: 1/50-200

p38 Rabbit polyclonal antibody

WB: 1/500 - 1/2000

Preparation

IHC: 1/100 - 1/300

Antigen: The antiserum was produced against synthesized peptide derived from human p38 MAPK. AA range:147-196

ELISA: 1/10000

Validations

Formulation

Liquid in PBS containing 50% glycerol, 0.5% BSA and 0.02% sodium azide.

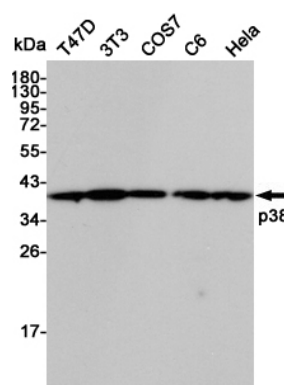
Storage

Store at 4°C short term. Store at -20°C long term. Avoid freeze / thaw cycle.

Clonality

Polyclonal

Ig Type



Western blot detection of p38 in T47D,3T3,COS7,C6 and HeLa cell lysates using p38 Rabbit pAb (1:5000 diluted).Predicted band size:41KDa.Observed band size:41KDa.