

## General Information

### Gene Name Synonym

Uncharacterized protein

### Protein Construction

A DNA sequence encoding the rhesus IFNA2 (NP\_001129266.1) (Cys24-Glu188) was expressed.

### Organism

Rhesus

### Expression Host

Yeast

## QC Testing

### Activity

Measured in antiviral assays using WISH cells infected with vesicuLar stomatitis virus. The ED<sub>50</sub> for this effect is typically 1.8-7.4 pg/mL.

### Purity

> (40.8+52.5) % as determined by SDS-PAGE.

### Endotoxin

Please contact us for more information.

### Stability

Samples are stable for up to twelve months from date of receipt at -70°C

### Predicted N terminal

Cys 24

## Molecular Mass

The recombinant rhesus IFNA2 consists 165 amino acids and predicts a molecular mass of 19.5 kDa.

## Formulation

Lyophilized from sterile PBS, pH 7.4.

1. 5 % trehalose and mannitol are added as protectants before lyophilization.

2. Please contact us for any concerns or special requirements.

## Usage Guide

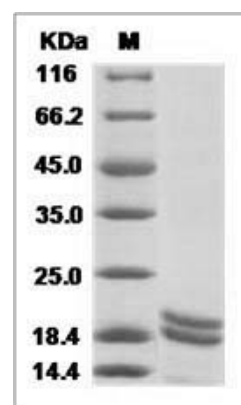
### Storage

Store it under sterile conditions at -20°C to -80°C. It is recommended that the protein be aliquoted for optimal storage. Avoid repeated freeze-thaw cycles.

### Reconstitution

Adding sterile water, prepare a stock solution of 0.25 mg/ml. Concentration is measured by UV-Vis.

## SDS-PAGE



Cynomolgus / Rhesus IFNA2 / Interferon alpha 2 Protein