

# SLC22A15 antibody



Catalog Number: 115313

## Product name

SLC22A15 antibody

## Immunogen

[Human SLC22A15 Recombinant protein \(GST tag\)](#)

## Specificity

human, mouse; other species not tested.

## Antibody description

SLC22A15 Rabbit Polyclonal antibody. Positive WB detected in HEK-293 cells, A431 cells, human brain tissue, human heart tissue, human skeletal muscle tissue, human placenta tissue, L02 cells. Observed molecular weight by Western-blot: 61-66kd

## Preparation

This antibody was obtained by immunization of SLC22A15 recombinant protein (Accession Number: BC026358). Purification method: Antigen affinity purified.

## Formulation

PBS with 0.02% sodium azide and 50% glycerol pH 7.3.

## Storage

Store at -20°C. DO NOT ALIQUOT

## Clonality

Polyclonal

## Ig Type

Rabbit IgG

## Applications

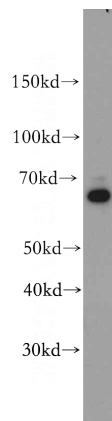
ELISA, WB

## Dilutions

Recommended Dilution:

WB: 1:500-1:5000

## Validations



HEK-293 cells were subjected to SDS PAGE followed by western blot with Catalog No:115313(SLC22A15 antibody) at dilution of 1:500