

# Mouse E-Selectin/CD62e/SELE (Fc Tag) recombinant protein



Catalog Number: 503313

## General Information

### Gene Name Synonym

CD62 antigen-like family member E; Endothelial leukocyte adhesion molecule 1; Leukocyte-endothelial cell adhesion molecule 2

### Protein Construction

A DNA sequence encoding the mouse SELE (NP\_035475.1)(Met1-Pro564) was expressed with the Fc region of human IgG1 at the C-terminus.

### Organism

Mouse

### Expression Host

Human Cells

## QC Testing

### Activity

Measured by the ability of the immobilized protein to support the adhesion of U937 cells.

When  $5 \times 10^4$  cells/well are added to SELE coated plates (2  $\mu\text{g}/\text{mL}$  and 100  $\mu\text{L}/\text{well}$ ), approximately >70% cells will adhere specifically after 60 minutes at 37°C.

### Purity

> 90 % as determined by SDS-PAGE

### Endotoxin

< 1.0 EU per  $\mu\text{g}$  of the protein as determined by the LAL method

### Stability

Samples are stable for up to twelve months from date of receipt at -70°C

### Predicted N terminal

Trp 29

### Molecular Mass

The recombinant mouse SELE/Fc is a disulfide-linked homodimer. The reduced monomer comprises 777 amino acids and has a predicted molecular mass of 85.5 kDa. The apparent molecular mass of the protein is approximately 101 kDa in SDS-PAGE under reducing conditions due to glycosylation.

### Formulation

Lyophilized from sterile PBS, pH 7.4.

1. 5 % trehalose and mannitol are added as protectants before lyophilization.
2. Please contact us for any concerns or special requirements.

## Usage Guide

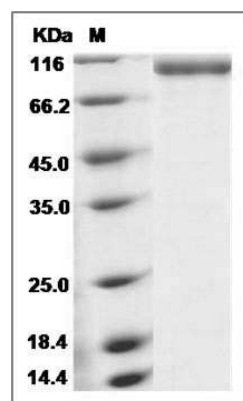
### Storage

Store it under sterile conditions at -20°C to -80°C. It is recommended that the protein be aliquoted for optimal storage. Avoid repeated freeze-thaw cycles.

### Reconstitution

Adding sterile water, prepare a stock solution of 0.25 mg/ml. Concentration is measured by UV-Vis.

### SDS-PAGE



Mouse E-Selectin / CD62e / SELE Protein (Fc Tag)

**Mouse E-Selectin/CD62e/SELE (Fc Tag)  
recombinant protein**



Catalog Number: 503313

---

SDS-PAGE