

Anti-DPP6 antibody



Catalog Number: 142313

Product name

Anti-DPP6 antibody

Specificity

Human DPP6

Antibody description

Rabbit Polyclonal to Human DPP6

Preparation

Produced in rabbits immunized with a synthetic peptide corresponding to the center region of the Human DPP6, and purified by antigen affinity chromatography.

Formulation

0.2 µm filtered solution in PBS

Storage

This antibody can be stored at 2°C-8°C for one month without detectable loss of activity. Antibody products are stable for twelve months from date of receipt when stored at -20°C to -80°C.

Preservative-Free.

Sodium azide is recommended to avoid contamination (final concentration 0.05%-0.1%). It

is toxic to cells and should be disposed of properly. Avoid repeated freeze-thaw cycles.

Clonality

Polyclonal

Ig Type

Rabbit IgG

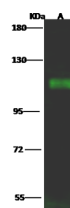
Applications

WB

Dilutions

WB: 5-20 µg/ml

Validations



Lanes	A
Items	
Sample	Mouse Brain Tissue lysate
Sample Volume (µg/lane)	30
Gel	7.5% SDS-PAGE reducing gel
Recommended Concentration	5-20 µg/ml
Secondary Antibody	Dylight 800-labeled Antibody to Rabbit IgG (1:1), at 1:5000 dilution.
	Developed using Odyssey Imaging system.
Explanation	Predicted band size : 98 kDa Observed band size : 112 kDa

Human DPP6 Western blot (WB) 14569