

# Anti-CNDP1 antibody



Catalog Number: 100313

## Product name

Anti-CNDP1 antibody

## Clonality

Polyclonal

## Immunogen

[Mouse CNDP1 \(His Tag\) recombinant protein](#)

## Ig Type

Rabbit IgG

## Specificity

Mouse CNDP1

## Applications

ELISA, IHC-P

## Antibody description

Rabbit polyclonal to CNDP1

## Dilutions

ELISA: 0.1-0.2 µg/mL

## Preparation

Produced in rabbits immunized with purified, recombinant Mouse CNDP1 (rh CNDP1; Q8BUG2; Met1-Tyr492). CNDP1 specific IgG was purified by Mouse CNDP1 affinity chromatography.

This antibody can be used at 0.1-0.2 µg/mL with the appropriate secondary reagents to detect Mouse CNDP1. The detection limit for Mouse CNDP1 is < 0.039 ng/well.

IHC-P: 0.1-2 µg/ml

## Formulation

0.2 µm filtered solution in PBS

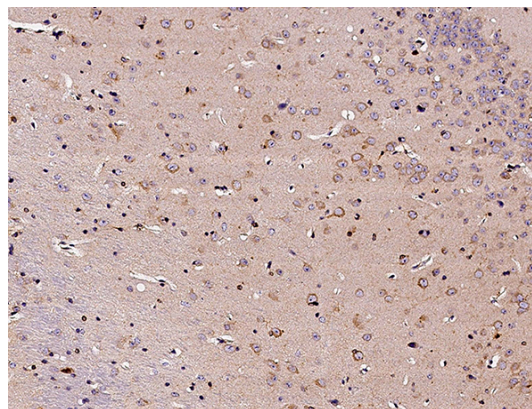
## Validations

## Storage

This antibody can be stored at 2°C-8°C for one month without detectable loss of activity. Antibody products are stable for twelve months from date of receipt when stored at -20°C to -80°C.

Preservative-Free.

Sodium azide is recommended to avoid contamination (final concentration 0.05%-0.1%). It is toxic to cells and should be disposed of properly. Avoid repeated freeze-thaw cycles.



CNDP1 Antibody, Rabbit PAb, Antigen Affinity Purified, Immunohistochemistry