

# LGTN antibody



Catalog Number: 112213

## Product name

LGTN antibody

## Specificity

Human, Mouse, Rat; other species not tested.

## Antibody description

LGTN Rabbit Polyclonal antibody. Positive IF detected in HepG2 cells. Positive WB detected in HeLa cells, HepG2 cells, PC-3 cells. Observed molecular weight by Western-blot: 65 kDa

## Preparation

This antibody was obtained by immunization of LGTN recombinant protein (Accession Number: NM\_006893). Purification method: Antigen affinity purified.

## Formulation

PBS with 0.1% sodium azide and 50% glycerol pH 7.3.

## Storage

Store at -20°C. DO NOT ALIQUOT

## Clonality

Polyclonal

## Ig Type

Rabbit IgG

## Applications

ELISA, WB, IF

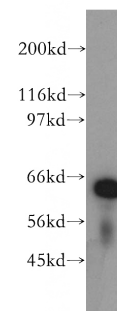
## Dilutions

Recommended Dilution:

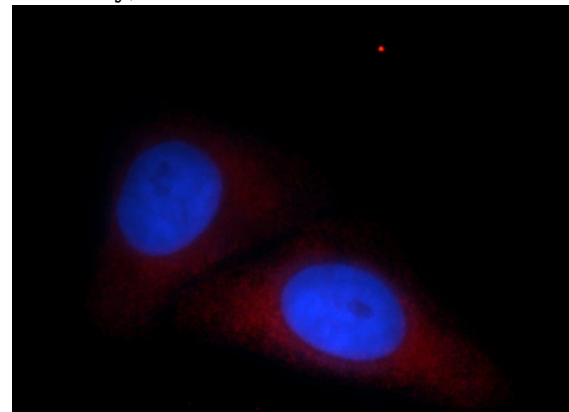
WB: 1:500-1:5000

IF: 1:10-1:100

## Validations



HeLa cells were subjected to SDS PAGE followed by western blot with Catalog No:112213(LGTN antibody) at dilution of 1:500



Immunofluorescent analysis of HepG2 cells, using LGTN antibody Catalog No:112213 at 1:25 dilution and Rhodamine-labeled goat anti-rabbit IgG (red). Blue pseudocolor = DAPI (fluorescent DNA dye).