

CAMK2 antibody

Catalog Number: 108913

Product name

CAMK2 antibody

IHC: 1:50-1:500

IF: 1:20-1:200

Specificity

Human, Mouse, Rat; other species not tested.

Antibody description

CAMK2 Rabbit Polyclonal antibody. Positive WB detected in HEK-293 cells. Positive IF detected in SH-SY5Y cells. Positive IHC detected in human renal cell carcinoma tissue. Observed molecular weight by Western-blot: 45 kDa

Preparation

This antibody was obtained by immunization of CAMK2 recombinant protein (Accession Number: NM_171825). Purification method: Antigen affinity purified.

Formulation

PBS with 0.02% sodium azide and 50% glycerol pH 7.3.

Storage

Store at -20°C. DO NOT ALIQUOT

Clonality

Polyclonal

Ig Type

Rabbit IgG

Applications

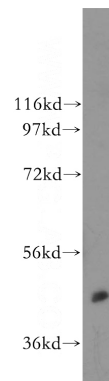
ELISA, WB, IF, IHC

Dilutions

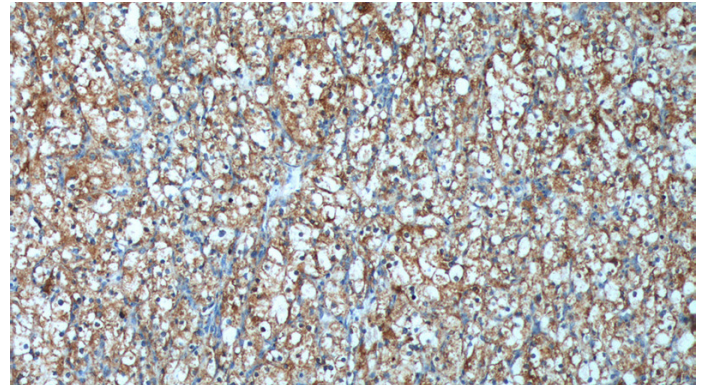
Recommended Dilution:

WB: 1:200-1:2000

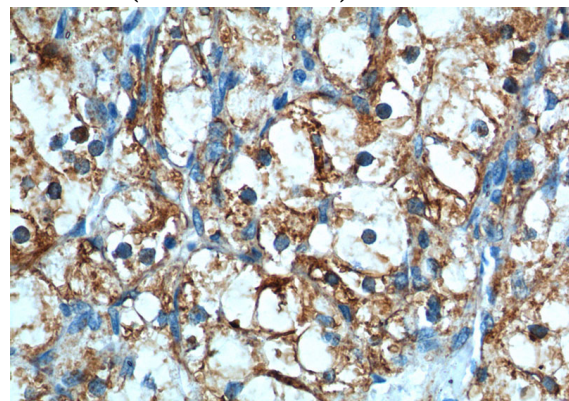
Validations



HEK-293 cells were subjected to SDS PAGE followed by western blot with Catalog No:108913(CAMK2A antibody) at dilution of 1:400



Immunohistochemistry of paraffin-embedded human renal cell carcinoma tissue slide using Catalog No:108913(CAMK2A Antibody) at dilution of 1:200 (under 10x lens).



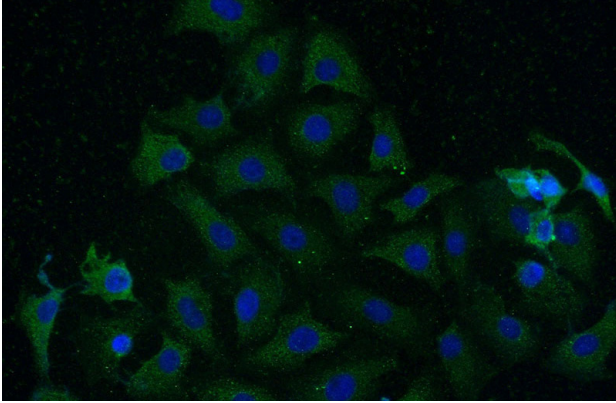
Immunohistochemistry of paraffin-embedded

CAMK2 antibody



Catalog Number: 108913

human renal cell carcinoma tissue slide using Catalog No:108913(CAMK2A Antibody) at dilution of 1:200 (under 40x lens).



Immunofluorescent analysis of (-20oc Ethanol) fixed SH-SY5Y cells using Catalog No:108913(CAMK2A Antibody) at dilution of 1:50 and Alexa Fluor 488-conjugated AffiniPure Goat Anti-Rabbit IgG(H+L)