

# Anti-FKBP7 / Rotamase antibody



Catalog Number: 103913

## Product name

Anti-FKBP7 / Rotamase antibody

## Immunogen

[Human FKBP7 / Rotamase \(His Tag\) recombinant protein](#)

## Specificity

Human FKBP7 / Rotamase

## Antibody description

Rabbit polyclonal to FKBP7 / Rotamase

## Preparation

Produced in rabbits immunized with purified, recombinant Human FKBP7 / Rotamase (rh FKBP7 / Rotamase; Q9Y680-2; Met1-Gln218). FKBP7 / Rotamase specific IgG was purified by Human FKBP7 / Rotamase affinity chromatography.

## Formulation

0.2  $\mu$ m filtered solution in PBS

## Storage

This antibody can be stored at 2°C-8°C for one month without detectable loss of activity. Antibody products are stable for twelve months from date of receipt when stored at -20°C to -80°C.

Preservative-Free.

Sodium azide is recommended to avoid contamination (final concentration 0.05%-0.1%). It is toxic to cells and should be disposed of properly. Avoid repeated freeze-thaw cycles.

## Clonality

Polyclonal

## Ig Type

Rabbit IgG

## Applications

ELISA, WB, IP

## Dilutions

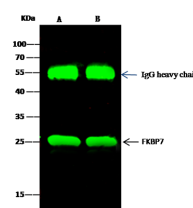
WB: 5-10  $\mu$ g/mL

ELISA: 0.1-0.2  $\mu$ g/mL

This antibody can be used at 0.1-0.2  $\mu$ g/mL with the appropriate secondary reagents to detect Human FKBP7 / Rotamase. The detection limit for Human FKBP7 / Rotamase is < 0.039 ng/well.

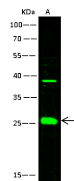
IP: 1-4  $\mu$ g/mg of lysate

## Validations



| Lanes                      | A  | B    |
|----------------------------|--|------|
| Items                      | HepG2  | 293T |
| Sample (whole cell lysate) |  |      |
| Sample quantity            | 0.5 mg   |      |
| IP antibody quantity       | 2 $\mu$ g  |      |
| Protein G agarose          | 15 $\mu$ l of 50% Protein G Agarose                                  |      |
| Gel                        | 13% SDS-PAGE reducing gel  |      |
| Primary antibody           | FKBP7 His antibody at 5 $\mu$ g/ml                                   |      |
| Secondary antibody         | Dylight 800-labeled antibody to rabbit IgG (H+L), at 1:5000 dilution |      |

FKBP7 / Rotamase Antibody, Rabbit PAb, Antigen Affinity Purified, Immunoprecipitation



| Lanes                                  | A   |
|--|---|
| Items                                  | HepG2   |
| Sample (whole cell lysate)             |   |
| Sample Volume ( $\mu$ g/lane)          | 30  |
| Gel                                    | 13% SDS-PAGE reducing gel   |
| Recommended concentration              | 5.10 $\mu$ g/ml   |
| Secondary Antibody                     | Dylight 800-labeled Antibody to Rabbit IgG (H+L), at 1:5000 dilution  |
| Developed using Odyssey imaging system |   |
| Explanation                            | Predicted band size : 26 kDa<br>Observed band size : 26 kDa<br>Additional bands at : 38 kDa (We are unsure as to the identity of these extra bands. They are possible non-specific bindings). |

FKBP7 / Rotamase Antibody, Rabbit PAb, Antigen Affinity Purified, Western blot