

GCOM1 antibody



Catalog Number: 110913

Product name

GCOM1 antibody

Immunogen

[Human GCOM1 Recombinant protein \(GST tag\)](#)

Specificity

Human, Mouse, Rat; other species not tested.

Antibody description

GCOM1 Rabbit Polyclonal antibody. Positive WB detected in human brain tissue. Positive IHC detected in human liver tissue. Positive IF detected in HepG2 cells, Hela cells. Observed molecular weight by Western-blot: 64kd, 44-54kd

Preparation

This antibody was obtained by immunization of GCOM1 recombinant protein (Accession Number: NM_001018096). Purification method: Antigen affinity purified.

Formulation

PBS with 0.02% sodium azide and 50% glycerol pH 7.3.

Storage

Store at -20°C. DO NOT ALIQUOT

Clonality

Polyclonal

Ig Type

Rabbit IgG

Applications

ELISA, WB, IHC, IF

Dilutions

Recommended Dilution:

WB: 1:500-1:5000

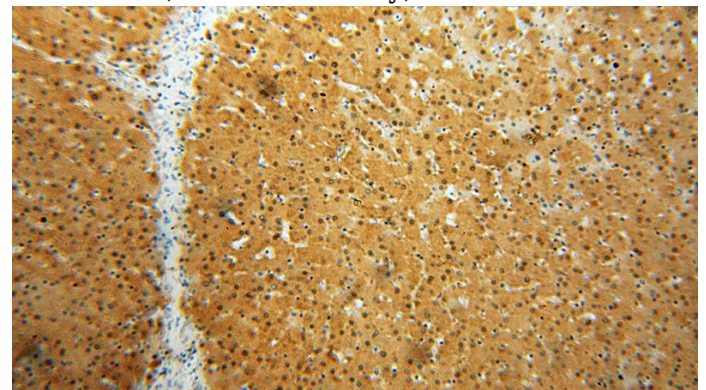
IHC: 1:20-1:200

IF: 1:10-1:100

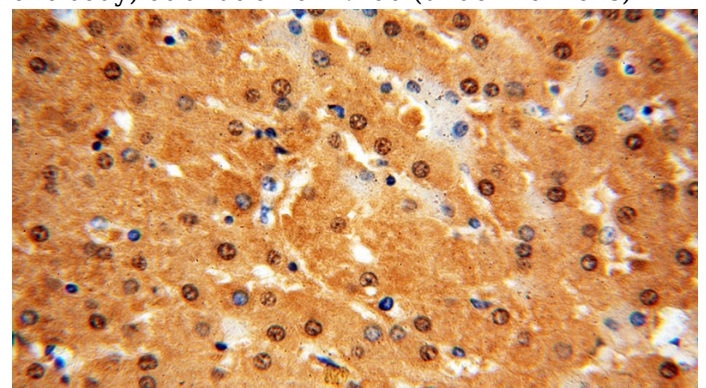
Validations



human brain tissue were subjected to SDS PAGE followed by western blot with Catalog No:110913(GCOM1 antibody) at dilution of 1:1500



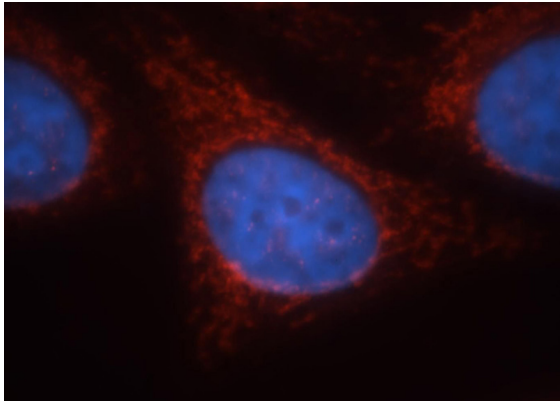
Immunohistochemical of paraffin-embedded human liver using Catalog No:110913(GCOM1 antibody) at dilution of 1:100 (under 10x lens)



GCOM1 antibody

Catalog Number: 110913

Immunohistochemical of paraffin-embedded human liver using Catalog No:110913(GCOM1 antibody) at dilution of 1:100 (under 40x lens)



Immunofluorescent analysis of HepG2 cells, using GCOM1 antibody Catalog No:110913 at 1:25 dilution and Rhodamine-labeled goat anti-rabbit IgG (red). Blue pseudocolor = DAPI (fluorescent DNA dye).