

# CPLX4 antibody



Catalog Number: 109513

## Product name

CPLX4 antibody

## Immunogen

[Human CPLX4 Recombinant protein \(GST tag\)](#)

## Specificity

Human, Mouse, Rat; other species not tested.

## Antibody description

CPLX4 Rabbit Polyclonal antibody. Positive IHC detected in human brain tissue. Positive IP detected in Y79 cells. Positive WB detected in Y79 cells. Observed molecular weight by Western-blot: 21-23kd

## Preparation

This antibody was obtained by immunization of CPLX4 recombinant protein (Accession Number: NM\_181654). Purification method: Antigen affinity purified.

## Formulation

PBS with 0.02% sodium azide and 50% glycerol pH 7.3.

## Storage

Store at -20°C. DO NOT ALIQUOT

## Clonality

Polyclonal

## Ig Type

Rabbit IgG

## Applications

ELISA, WB, IHC, IP

## Dilutions

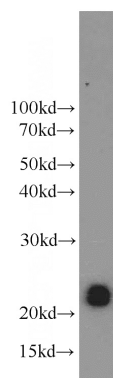
Recommended Dilution:

WB: 1:500-1:5000

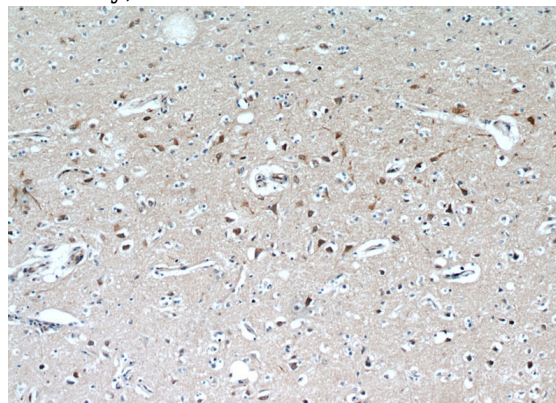
IP: 1:500-1:5000

IHC: 1:20-1:200

## Validations



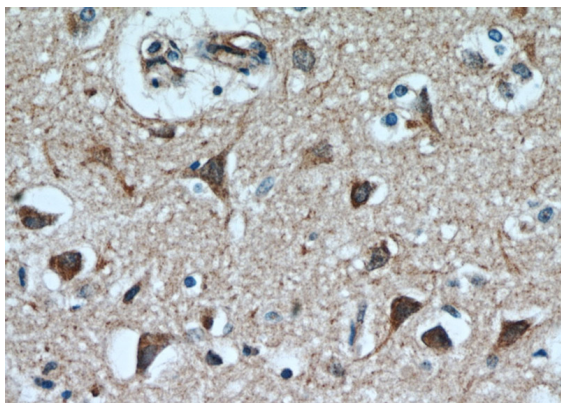
Y79 cells were subjected to SDS PAGE followed by western blot with Catalog No:109513(CPLX4 antibody) at dilution of 1:1500



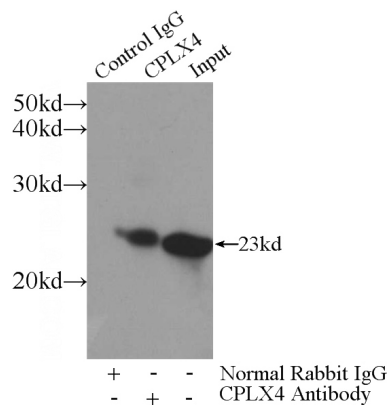
Immunohistochemical of paraffin-embedded human brain using Catalog No:109513(CPLX4 antibody) at dilution of 1:100 (under 10x lens)

# CPLX4 antibody

Catalog Number: 109513



Immunohistochemical of paraffin-embedded human brain using Catalog No:109513(CPLX4 antibody) at dilution of 1:100 (under 40x lens)



IP Result of anti-CPLX4 (IP:Catalog No:109513, 3ug; Detection:Catalog No:109513 1:1000) with Y79 cells lysate 960ug.