

KPNA2 antibody

Catalog Number: 112113

Product name

KPNA2 antibody

IHC: 1:20-1:200

IF: 1:20-1:200

Specificity

Human, Mouse, Rat; other species not tested.

Antibody description

KPNA2 Rabbit Polyclonal antibody. Positive IF detected in HepG2 cells. Positive IHC detected in human colon cancer tissue. Positive WB detected in HepG2 cells, Jurkat cells, mouse heart tissue, Raji cells. Observed molecular weight by Western-blot: 55-58 kDa

Preparation

This antibody was obtained by immunization of KPNA2 recombinant protein (Accession Number: NM_002266). Purification method: Antigen affinity purified.

Formulation

PBS with 0.1% sodium azide and 50% glycerol pH 7.3.

Storage

Store at -20°C. DO NOT ALIQUOT

Clonality

Polyclonal

Ig Type

Rabbit IgG

Applications

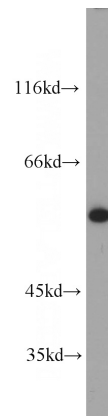
ELISA, WB, IF, IHC

Dilutions

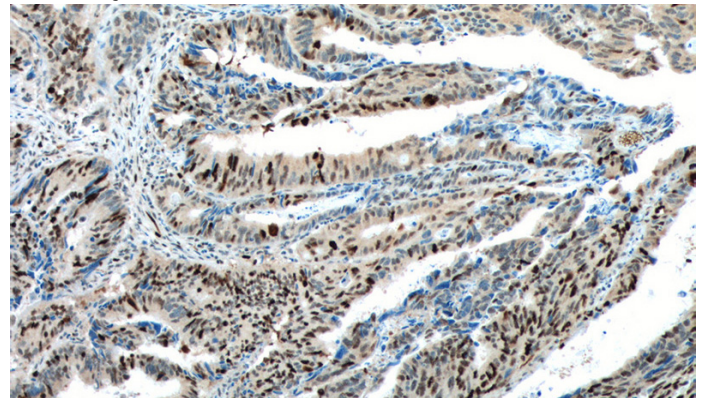
Recommended Dilution:

WB: 1:500-1:5000

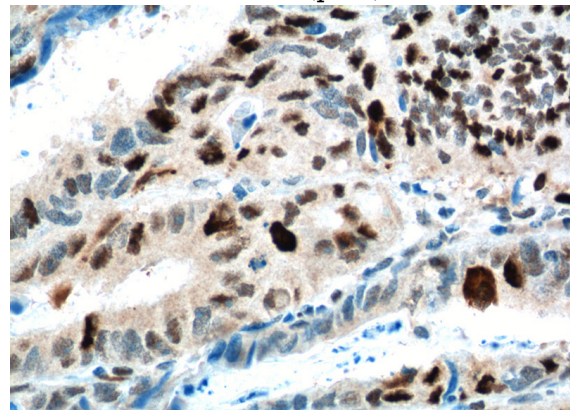
Validations



HepG2 cells were subjected to SDS PAGE followed by western blot with Catalog No:112113(KPNA2 antibody) at dilution of 1:1000



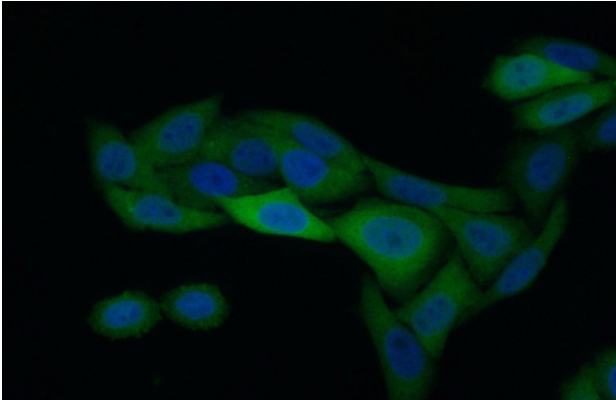
Immunohistochemistry of paraffin-embedded human colon cancer tissue slide using Catalog No:112113(KPNA2 Antibody) at dilution of 1:200 (under 10x lens). heat mediated antigen retrieved with Tris-EDTA buffer(pH9).



KPNA2 antibody

Catalog Number: 112113

Immunohistochemistry of paraffin-embedded human colon cancer tissue slide using Catalog No:112113(KPNA2 Antibody) at dilution of 1:200 (under 40x lens). heat mediated antigen retrieved with Tris-EDTA buffer(pH9).



Immunofluorescent analysis of (10% Formaldehyde) fixed HepG2 cells using Catalog No:112113(KPNA2 Antibody) at dilution of 1:50 and Alexa Fluor 488-conjugated AffiniPure Goat Anti-Rabbit IgG(H+L)