

RPL13 antibody

Catalog Number: 114813

Product name

RPL13 antibody

Specificity

Human, Mouse, Rat; other species not tested.

Antibody description

RPL13 Rabbit Polyclonal antibody. Positive IHC detected in human colon cancer tissue. Positive WB detected in HeLa cells, human lung tissue. Observed molecular weight by Western-blot: 24 kDa

Preparation

This antibody was obtained by immunization of RPL13 recombinant protein (Accession Number: NM_000977). Purification method: Antigen affinity purified.

Formulation

PBS with 0.1% sodium azide and 50% glycerol pH 7.3.

Storage

Store at -20°C. DO NOT ALIQUOT

Clonality

Polyclonal

Ig Type

Rabbit IgG

Applications

ELISA, WB, IHC

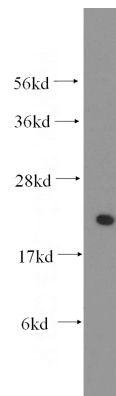
Dilutions

Recommended Dilution:

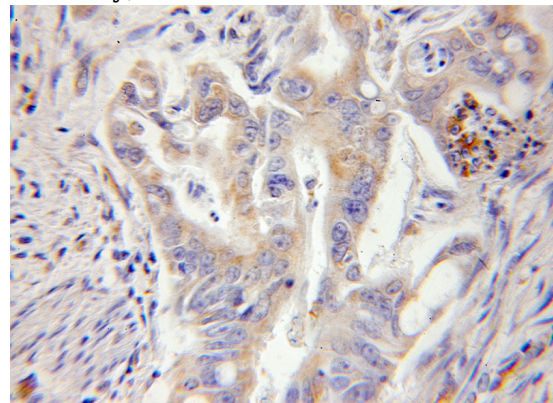
WB: 1:200-1:2000

IHC: 1:20-1:200

Validations



HeLa cells were subjected to SDS PAGE followed by western blot with Catalog No:114813(RPL13 antibody) at dilution of 1:300



Immunohistochemical of paraffin-embedded human colon cancer using Catalog No:114813(RPL13 antibody) at dilution of 1:50 (under 10x lens)