

Human ILT6 / LILRA3 (Fc Tag) recombinant protein



Catalog Number: 502813

General Information

Gene Name Synonym

CD85 antigen-like family member E; Immunoglobulin-like transcript 6; Leukocyte immunoglobulin-like receptor 4; Monocyte inhibitory receptor HM43/HM31

Protein Construction

A DNA sequence encoding the human LILRA3 (AAH28208.1) (Met1-Glu439) was expressed, fused with the Fc region of human IgG1 at the C-terminus.

Organism

Human

Expression Host

Human Cells

QC Testing

Purity

> 80 % as determined by SDS-PAGE

Endotoxin

< 1.0 EU per μg of the protein as determined by the LAL method

Stability

Samples are stable for up to twelve months from date of receipt at -70°C

Predicted N terminal

Gly 24

Molecular Mass

The recombinant human LILRA3/Fc is a disulfide-linked homodimer. The reduced monomer comprises 657 amino acids and has a predicted molecular mass of 72 kDa. The apparent molecular mass of the protein is approximately 102 kDa in SDS-PAGE under reducing conditions.

Formulation

Lyophilized from sterile PBS, pH 7.4

1. 5 % trehalose and mannitol are added as protectants before lyophilization.

2. Please contact us for any concerns or special requirements.

Usage Guide

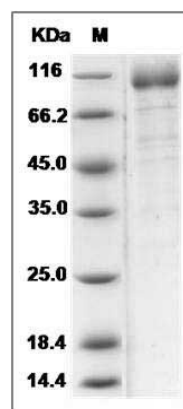
Storage

Store it under sterile conditions at -20°C to -80°C . It is recommended that the protein be aliquoted for optimal storage. Avoid repeated freeze-thaw cycles.

Reconstitution

Adding sterile water, prepare a stock solution of 0.25 mg/ml. Concentration is measured by UV-Vis.

SDS-PAGE



Human ILT6 / LILRA3 Protein (Fc Tag) SDS-PAGE