

Involucrin antibody

Catalog Number: 111813

Product name

Involucrin antibody

Specificity

Human, Mouse; other species not tested.

Antibody description

Involucrin Rabbit Polyclonal antibody. Positive WB detected in Raji cells, NIH/3T3 cells. Positive IHC detected in human skin tissue, human oesophagus tissue. Observed molecular weight by Western-blot: 80-90kd or 56-70kd

Preparation

This antibody was obtained by immunization of Peptide (Accession Number: NM_005547). Purification method: Antigen affinity purified.

Formulation

PBS with 0.02% sodium azide and 50% glycerol pH 7.3.

Storage

Store at -20°C. DO NOT ALIQUOT

Clonality

Polyclonal

Ig Type

Rabbit IgG

Applications

ELISA, WB, IHC

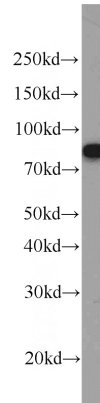
Dilutions

Recommended Dilution:

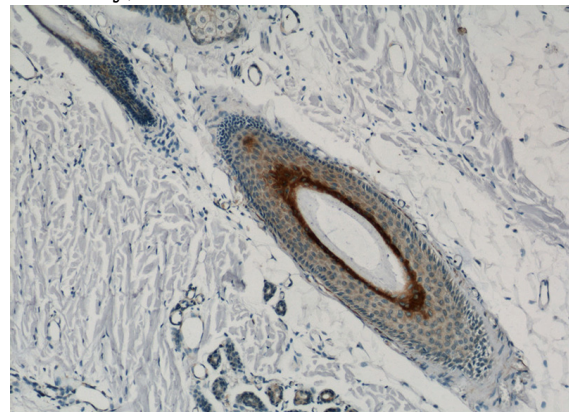
WB: 1:200-1:2000

IHC: 1:20-1:200

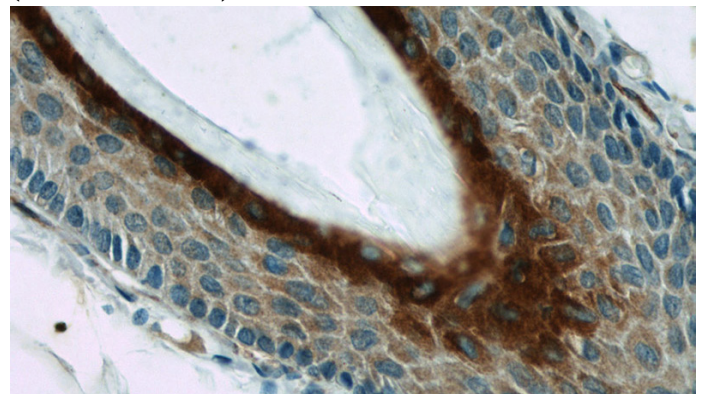
Validations



Raji cells were subjected to SDS PAGE followed by western blot with Catalog No:111813(IVL antibody) at dilution of 1:500



Immunohistochemistry of paraffin-embedded human skin tissue slide using Catalog No:111813(Involucrin Antibody) at dilution of 1:50 (under 10x lens)



Immunohistochemistry of paraffin-embedded human skin tissue slide using Catalog No:111813(Involucrin Antibody) at dilution of 1:50 (under 40x lens)