

CMC1 antibody

Catalog Number: 109413

Product name

CMC1 antibody

Specificity

Human, Mouse; other species not tested.

Antibody description

CMC1 Rabbit Polyclonal antibody. Positive IHC detected in human stomach tissue, human liver cancer tissue. Positive WB detected in K-562 cells, mouse liver tissue. Observed molecular weight by Western-blot: 12-15 kDa

Preparation

This antibody was obtained by immunization of CMC1 recombinant protein (Accession Number: NM_182523). Purification method: Antigen Affinity purified.

Formulation

PBS with 0.02% sodium azide and 50% glycerol pH 7.3.

Storage

Store at -20°C. DO NOT ALIQUOT

Clonality

Polyclonal

Ig Type

Rabbit IgG

Applications

ELISA, WB, IHC

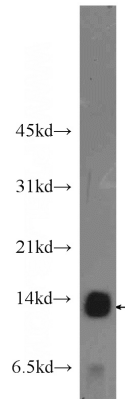
Dilutions

Recommended Dilution:

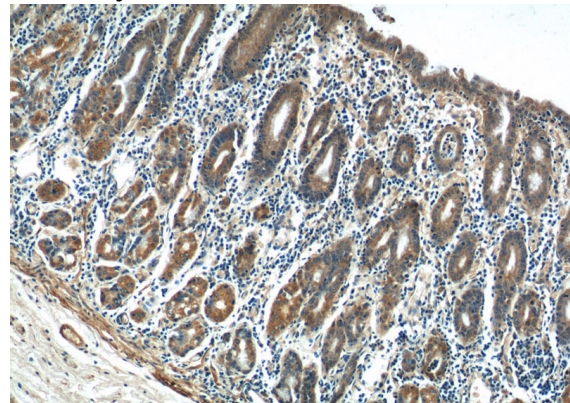
WB: 1:200-1:1000

IHC: 1:20-1:200

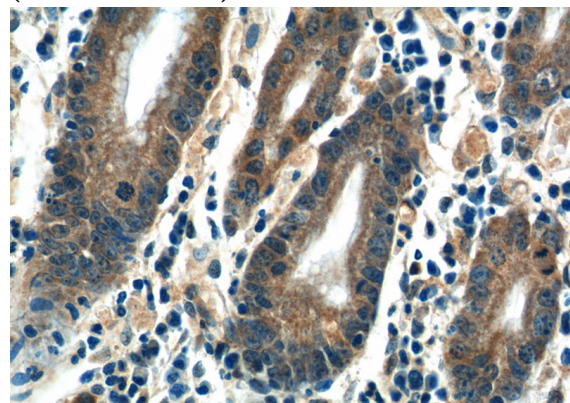
Validations



K-562 cells were subjected to SDS PAGE followed by western blot with Catalog No:109413(CMC1 Antibody) at dilution of 1:300



Immunohistochemistry of paraffin-embedded human stomach tissue slide using Catalog No:109413(CMC1 Antibody) at dilution of 1:50 (under 10x lens)



Immunohistochemistry of paraffin-embedded human stomach tissue slide using Catalog

CMC1 antibody



Catalog Number: 109413

No:109413(CMC1 Antibody) at dilution of 1:50 (under 40x lens)