

Anti-SSX1 antibody

Catalog Number: 176413

Product name

Anti-SSX1 antibody

Specificity

Human

Antibody description

Rabbit polyclonal antibody to SSX1

Preparation

This antigen of this antibody was the antiserum was produced against synthesized peptide derived from the c-terminal region of human ssx1/2/3/4/5/6/7/8/9. aa range:139-188

Formulation

Liquid, Liquid in PBS containing 50% glycerol, 0.5% BSA and 0.02% sodium azide.

Storage

Store at +4°C after thawing. Aliquot store at -20°C or -80°C. Avoid repeated freeze / thaw cycles.

Clonality

Polyclonal

Ig Type

Rabbit IgG

Applications

WB, IHC-P

Dilutions

WB: 1:500-1:2000

IHC-P: 1:100-300

Validations

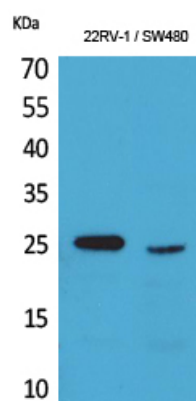
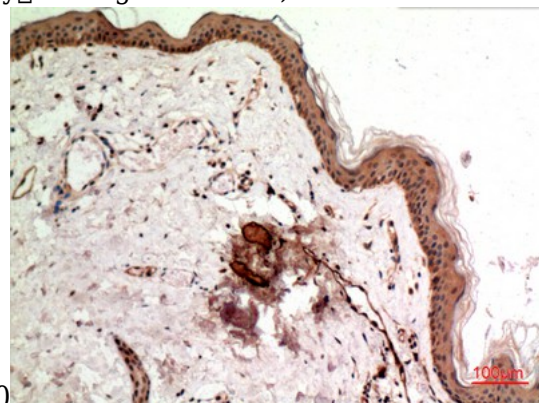


Fig1.; Western Blot analysis of 22RV-1, SW480 cells using SSX Polyclonal Antibody.. Secondary antibody (catalog#: HA1001) was diluted at



1:20000

Fig2.; Immunohistochemical analysis of paraffin-embedded human-skin, antibody was diluted at 1:100